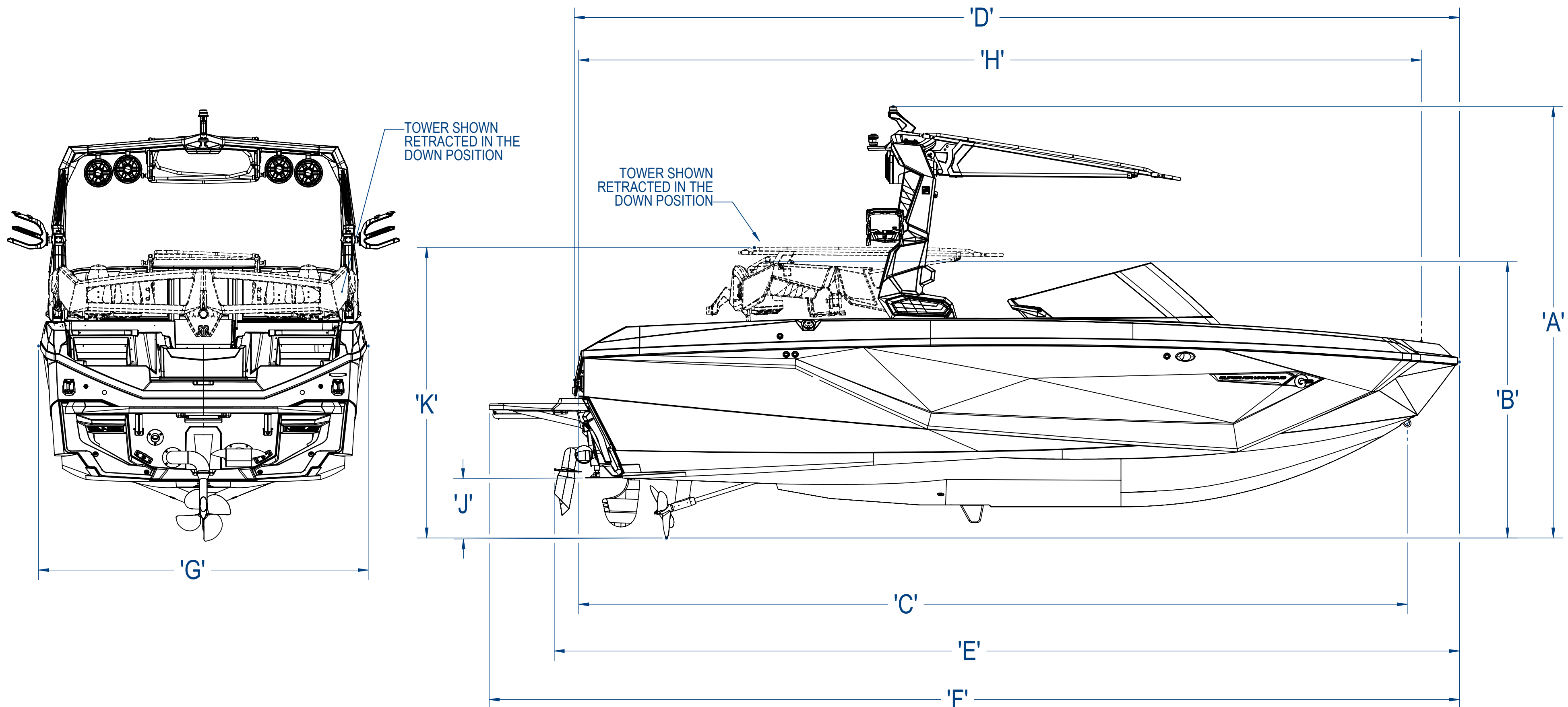



REV.	DESCRIPTION	APPROVED	DATE
B	MODEL SPECIFIC DIMS UPDATED ALL TABLES	S. BARRY	5/13/2021
C		S. BARRY	5/20/2021



*FOR GT TOWER OPTION SEE SHEET 2

TABLE 1*				
MODEL SPECIFIC DIMENSIONS				DIM DESCRIPTION
DIM	G21	G23	G25	
A	11' - 1 ¹ / ₄ " (3.38m)	11' - 2" (3.40m)	11' - 2" (3.40m)	PROPELLER TO TOP OF TOWER (IN UPRIGHT POSITION)
B	7' - 1 ¹ / ₂ " (2.17m)	7' - 1 ⁷ / ₈ " (2.18m)	7' - 1 ⁷ / ₈ " (2.18m)	PROPELLER TO TOP OF TOWER (IN DOWN POSITION - W/OUT BIMINI)
C	20' - 0" (6.09m)	21' - 6" (6.55m)	23' - 6" (7.13m)	BOW EYE TO TRANSOM LIFT RINGS
D	21' - 5 ¹ / ₂ " (6.54m)	23' (7.01m)	25' - 0" (7.62m)	LENGTH OVERALL ON CENTERLINE (NOT INCLUDING HARDWARE & PLATFORM)
E	21' - 11" (6.67m)	23' - 5" (7.13m)	25' - 5" (7.75m)	LENGTH OVERALL ON CENTERLINE (NOT INCLUDING PLATFORM)
F	23' - 7" (7.19m)	25' - 2" (7.65m)	27' - 1" (8.26m)	LENGTH OVERALL ON CENTERLINE (WITH PLATFORM)
G	102" (2.60m)	102" (2.60m)	102" (2.60m)	BEAM OVERALL
H	20' - 3 ³ / ₄ " (6.63m)	21' - 11 ¹ / ₂ " (6.69m)	23' - 9 ¹ / ₄ " (7.25m)	POP UP LIFT RING TO TRANSOM LIFT RING
J	18 ¹ / ₂ " (0.47m)	19" (0.48m)	19" (0.48m)	KEEL TO PROPELLER AT THE TRANSOM
K	7' - 5 ⁷ / ₈ " (2.28m)	7' - 6 ¹ / ₄ " (2.29m)	7' - 6 ¹ / ₄ " (2.29m)	PROPELLER TO TOP OF TOWER (IN DOWN POSITION - W/ BIMINI)

STANDARD TOWER

DESIGNED:	NAUTIQUE	MODEL:		G-SERIES	MY:	2022	
DRAWN:	T. CALANO	04/19/21	TITLE: GENERAL DIMENSIONS				
APPROVED:	S. BARRY	04/26/21					
ENG. LEAD:	E. MILLER						
DESIGN LEAD:	S. CARLTON						
PROPRIETARY AND CONFIDENTIAL THE INFORMATION CONTAINED IN THIS DRAWING IS THE SOLE PROPERTY OF NAUTIQUE BOAT COMPANY INC.. ANY REPRODUCTION IN PART OR AS A WHOLE WITHOUT THE WRITTEN PERMISSION OF NAUTIQUE BOAT COMPANY INC IS PROHIBITED.			SIZE C	ENG. NO. 120.1	REV +		
PART NO. N/A			SCALE: 1:24		SHEET: 1 OF 4		

REV.	DESCRIPTION	APPROVED	DATE
-	See Sheet1	-	-

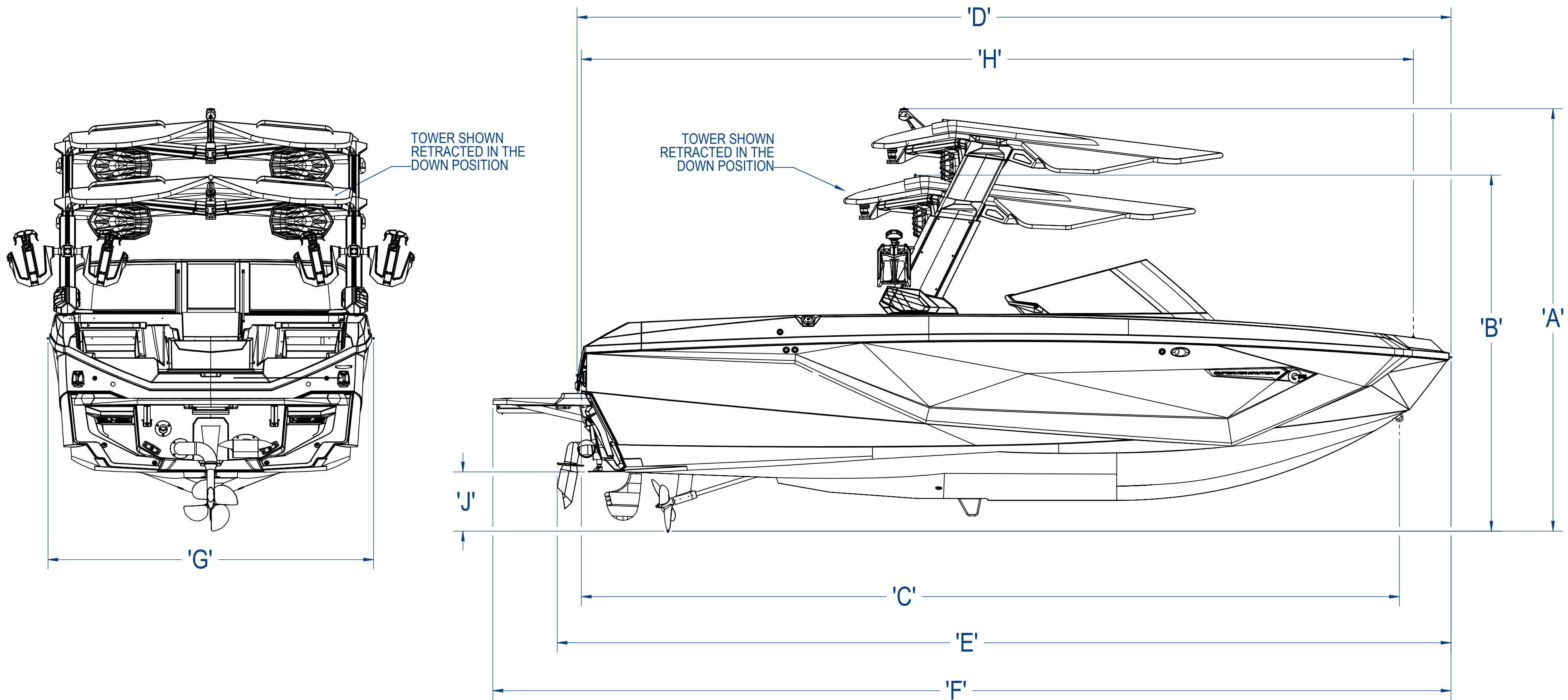

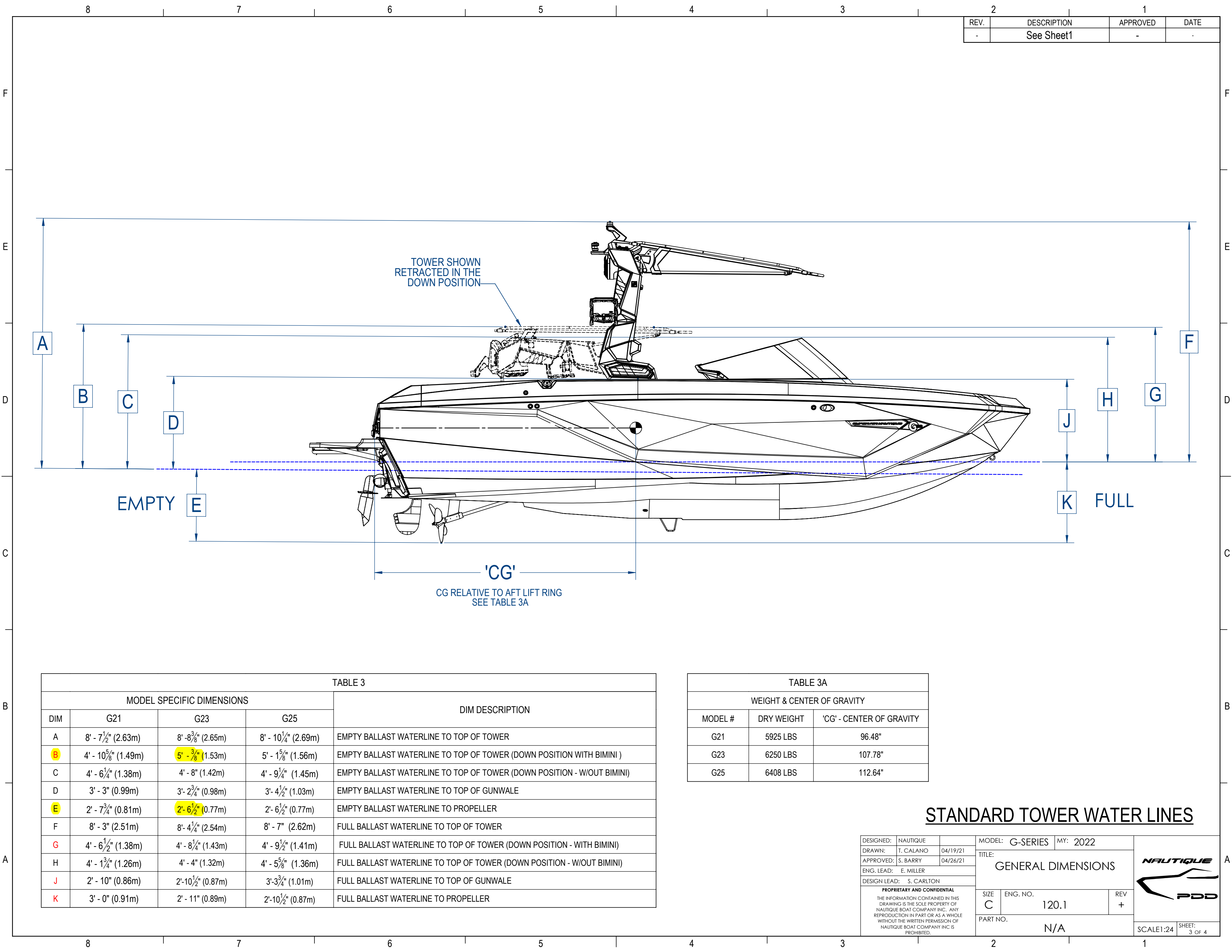


TABLE 2				
MODEL SPECIFIC DIMENSIONS				DIM DESCRIPTION
DIM	G21	G23	G25	
A	11' - 0" (3.35m)	11' - 1" (3.38m)	11' - 1" (3.38m)	PROPELLER TO TOP OF TOWER (IN UPRIGHT POSITION)
B	9' - 3 $\frac{1}{4}$ " (2.82m)	9' - 4" (2.84m)	9' - 4" (2.84m)	PROPELLER TO TOP OF TOWER (IN DOWN POSITION)
C	20' - 0" (6.09m)	21' - 6" (6.55m)	23' - 6" (7.13m)	BOW EYE TO TRANSOM LIFT RINGS
D	21' - 5 $\frac{1}{2}$ " (6.54m)	23' (7.01m)	25' - 0" (7.62m)	LENGTH OVERALL ON CENTERLINE(NOT INCLUDING HARDWARE & PLATFORM)
E	21' - 11" (6.67m)	23' - 5" (7.13m)	25' - 5" (7.75m)	LENGTH OVERALL ON CENTERLINE(NOT INCLUDING PLATFORM)
F	23' - 7" (7.19m)	25' - 2" (7.65m)	27' - 1" (8.26m)	LENGTH OVERALL ON CENTERLINE(WITH PLATFORM)
G	102" (2.60m)	102" (2.60m)	102" (2.60m)	BEAM OVERALL
H	20' - 3 $\frac{3}{4}$ " (6.63m)	21' - 11 $\frac{1}{2}$ " (6.69m)	23' - 9 $\frac{1}{4}$ " (7.25m)	POP UP LIFT RING TO TRANSOM LIFT RING
J	18 $\frac{1}{2}$ " (0.47m)	19" (0.48m)	19" (0.48m)	KEEL TO PROPELLER AT THE TRANSOM

GT TOWER OPTION

DESIGNED:	NAUTIQUE	MODEL:	G-SERIES	MY:	2022	
DRAWN:	T. CALANO	04/19/21	TITLE: GENERAL DIMENSIONS			
APPROVED:	S. BARRY	04/26/21				
ENG. LEAD:	E. MILLER					
DESIGN LEAD:	S. CARLTON					
PROPRIETARY AND CONFIDENTIAL THE INFORMATION CONTAINED IN THIS DRAWING IS THE SOLE PROPERTY OF NAUTIQUE BOAT COMPANY INC. ANY REPRODUCTION IN PART OR AS A WHOLE WITHOUT THE WRITTEN PERMISSION OF NAUTIQUE BOAT COMPANY INC IS PROHIBITED.			SIZE C	ENG. NO. 120.1	REV +	
PART NO. N/A			SCALE: 1/24		SHEET: 2 OF 4	





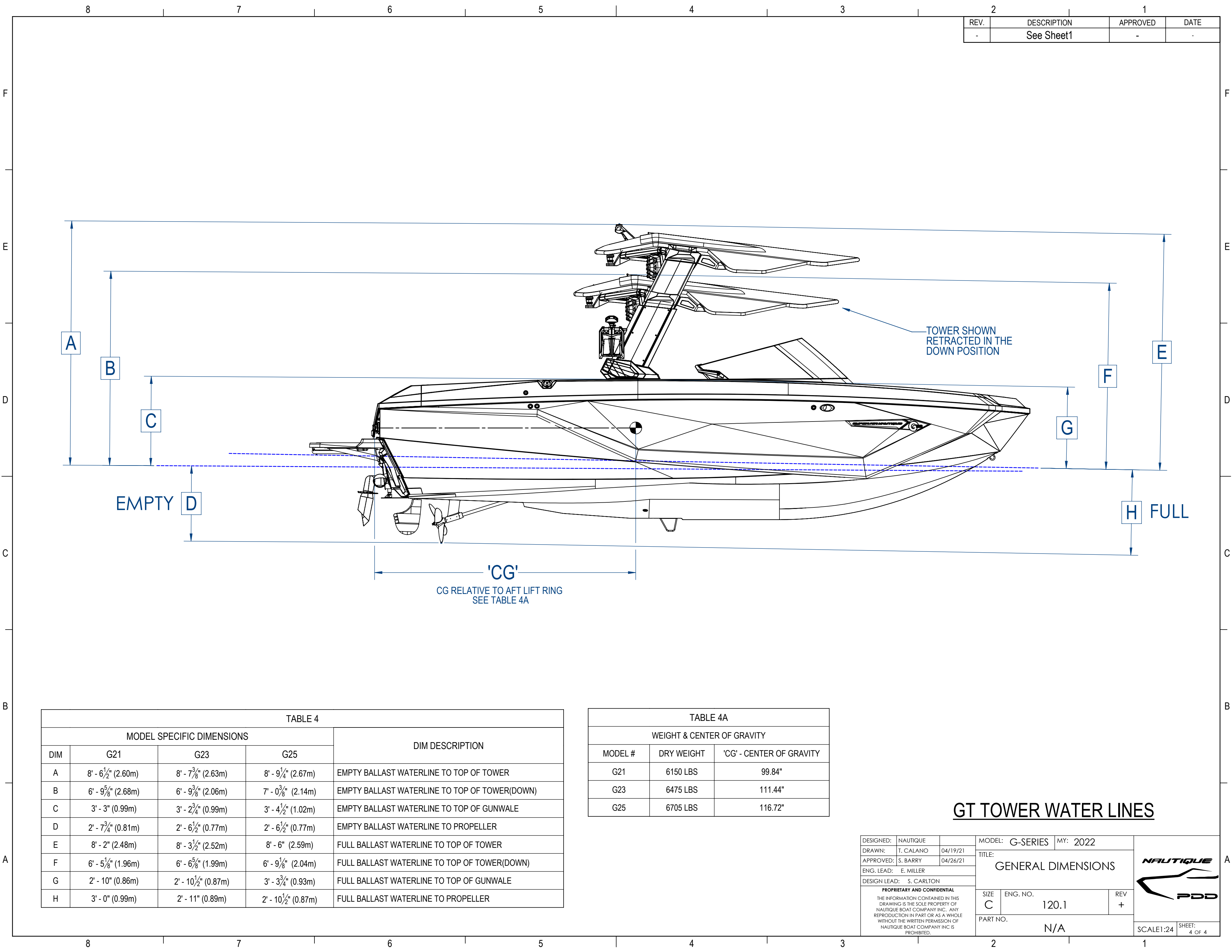
REV.	DESCRIPTION	APPROVED	DATE
-	See Sheet1	-	-

TABLE 3				
MODEL SPECIFIC DIMENSIONS				DIM DESCRIPTION
DIM	G21	G23	G25	
A	8' - 7½" (2.63m)	8' - 8¾" (2.65m)	8' - 10¼" (2.69m)	EMPTY BALLAST WATERLINE TO TOP OF TOWER
B	4' - 10⅝" (1.49m)	5' - ⅜" (1.53m)	5' - 1⅝" (1.56m)	EMPTY BALLAST WATERLINE TO TOP OF TOWER (DOWN POSITION WITH BIMINI)
C	4' - 6¾" (1.38m)	4' - 8" (1.42m)	4' - 9¼" (1.45m)	EMPTY BALLAST WATERLINE TO TOP OF TOWER (DOWN POSITION - W/OUT BIMINI)
D	3' - 3" (0.99m)	3' - 2¾" (0.98m)	3' - 4½" (1.03m)	EMPTY BALLAST WATERLINE TO TOP OF GUNWALE
E	2' - 7¾" (0.81m)	2' - 6½" (0.77m)	2' - 6½" (0.77m)	EMPTY BALLAST WATERLINE TO PROPELLER
F	8' - 3" (2.51m)	8' - 4¼" (2.54m)	8' - 7" (2.62m)	FULL BALLAST WATERLINE TO TOP OF TOWER
G	4' - 6½" (1.38m)	4' - 8¼" (1.43m)	4' - 9½" (1.41m)	FULL BALLAST WATERLINE TO TOP OF TOWER (DOWN POSITION - WITH BIMINI)
H	4' - 1¾" (1.26m)	4' - 4" (1.32m)	4' - 5⅝" (1.36m)	FULL BALLAST WATERLINE TO TOP OF TOWER (DOWN POSITION - W/OUT BIMINI)
J	2' - 10" (0.86m)	2' - 10½" (0.87m)	3' - 3¾" (1.01m)	FULL BALLAST WATERLINE TO TOP OF GUNWALE
K	3' - 0" (0.91m)	2' - 11" (0.89m)	2' - 10½" (0.87m)	FULL BALLAST WATERLINE TO PROPELLER

TABLE 3A		
WEIGHT & CENTER OF GRAVITY		
MODEL #	DRY WEIGHT	'CG' - CENTER OF GRAVITY
G21	5925 LBS	96.48"
G23	6250 LBS	107.78"
G25	6408 LBS	112.64"

STANDARD TOWER WATER LINES

DESIGNED:	NAUTIQUE		MODEL: G-SERIES		MY: 2022		
DRAWN:	T. CALANO	04/19/21	GENERAL DIMENSIONS				
APPROVED:	S. BARRY	04/26/21					
ENG. LEAD:	E. MILLER						
DESIGN LEAD:	S. CARLTON						
<div>PROPRIETARY AND CONFIDENTIAL</div> <div>THE INFORMATION CONTAINED IN THIS DRAWING IS THE SOLE PROPERTY OF NAUTIQUE BOAT COMPANY INC.. ANY REPRODUCTION IN PART OR AS A WHOLE WITHOUT THE WRITTEN PERMISSION OF NAUTIQUE BOAT COMPANY INC IS PROHIBITED.</div>			SIZE	ENG. NO.	REV		
			C	120.1	+		
						PART NO.	N/A
						SCALE 1:24	SHEET: 3 OF 4



REV.	DESCRIPTION	APPROVED	DATE
-	See Sheet1	-	-

TABLE 4				
MODEL SPECIFIC DIMENSIONS				DIM DESCRIPTION
DIM	G21	G23	G25	
A	8' - 6½" (2.60m)	8' - 7⅜" (2.63m)	8' - 9¼" (2.67m)	EMPTY BALLAST WATERLINE TO TOP OF TOWER
B	6' - 9⅝" (2.68m)	6' - 9⅜" (2.06m)	7' - 0⅜" (2.14m)	EMPTY BALLAST WATERLINE TO TOP OF TOWER(DOWN)
C	3' - 3" (0.99m)	3' - 2¼" (0.99m)	3' - 4½" (1.02m)	EMPTY BALLAST WATERLINE TO TOP OF GUNWALE
D	2' - 7¾" (0.81m)	2' - 6½" (0.77m)	2' - 6½" (0.77m)	EMPTY BALLAST WATERLINE TO PROPELLER
E	8' - 2" (2.48m)	8' - 3½" (2.52m)	8' - 6" (2.59m)	FULL BALLAST WATERLINE TO TOP OF TOWER
F	6' - 5⅛" (1.96m)	6' - 6⅝" (1.99m)	6' - 9⅛" (2.04m)	FULL BALLAST WATERLINE TO TOP OF TOWER(DOWN)
G	2' - 10" (0.86m)	2' - 10½" (0.87m)	3' - 3¾" (0.93m)	FULL BALLAST WATERLINE TO TOP OF GUNWALE
H	3' - 0" (0.99m)	2' - 11" (0.89m)	2' - 10½" (0.87m)	FULL BALLAST WATERLINE TO PROPELLER

TABLE 4A		
WEIGHT & CENTER OF GRAVITY		
MODEL #	DRY WEIGHT	'CG' - CENTER OF GRAVITY
G21	6150 LBS	99.84"
G23	6475 LBS	111.44"
G25	6705 LBS	116.72"

GT TOWER WATER LINES

DESIGNED: NAUTIQUE

DRAWN: T. CALANO 04/19/21

APPROVED: S. BARRY 04/26/21

ENG. LEAD: E. MILLER

DESIGN LEAD: S. CARLTON

MODEL: G-SERIES

MY: 2022

TITLE: GENERAL DIMENSIONS

SIZE C

ENG. NO. 120.1

REV +

PART NO. N/A

SCALE1:24

SHEET: 4 OF 4