





NAUTIQUE CARES

Recently a well-known leader in our industry gave Nautique an incredible compliment; he said that what sets us apart from other companies is that "Nautique cares!"

At Nautique we have the best team in the industry and we do care. This is reflected in many ways including:

-We are committed to building the highest quality product available. Our boats won't always be the least expensive but we care enough to build the best.

-We are committed to providing our customers with the best possible customer service. We care about you and want you to have a great time enjoying your Nautique with family and friends.

-We care about our world and are committed to using our resources to make the world a better place. Our team not only builds the world's best boats but is also committed to helping others around the world.

For those of you who are already part of the Nautique family, we appreciate your loyalty. For those of you who have not yet had the experience of owning a Nautique, we would love to have you join us! Learn more about us at nautique.com.

The best boats combined with the best service delivered by a committed team that cares about the world around us. Yes, Nautique cares.

Enjoy the Nautique life!



Bill Yeargin – President/CEO

***"Let us not love with words or tongue
but with actions and in truth."***

-1 John 3:18

YET ANOTHER DEMONSTRATION OF OUR COMMITMENT TO YOU

At Nautique, our commitment to stand behind the boats we build runs as deep as our passion to give you the absolute best watersports experience. Every Nautique features a 5-Year Transferable Warranty.* Just what you'd expect from the company that launched the industry in the first place and continues to lead the way with the highest-quality boats and unsurpassed customer service.



DELIVERING UNMATCHED CUSTOMER SATISFACTION

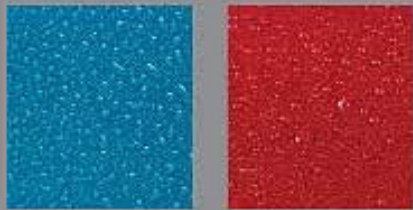
FOR THE SIXTH CONSECUTIVE YEAR, NAUTIQUE WON THE NMMA CSI AWARD, WHICH RECOGNIZES EXCELLENCE IN CUSTOMER SATISFACTION IN THE INBOARD WATERSPORTS BOAT CATEGORY.

Experience excellent service at its best with a premium boat manufacturer that continues to deliver total customer satisfaction to every owner time and time again.



* Nautique warrants to the original user or purchaser, whichever comes first, that each new Nautique boat, as originally manufactured by Correct Craft, shall under normal authorized use be free of defect in material and workmanship for a period of five (5) years from the date of delivery. Additional policies: Upholstery five-year coverage (3-year parts & labor; 2-year parts); Instrumentation including gauges five-year coverage (3-year parts and labor; 2-year parts); Audio and LINC System three-year coverage. Coastal Edition Nautique features a 3-Year Transferable Warranty. Visit your local Nautique dealer for a copy of the warranty in its entirety.





FROM INNOVATIONS TO ICONS WE TOWER ABOVE THE COMPETITION

Year after year, watersports customers look to Nautique for the latest in technology and design, and they always find it. This year, our line includes two iconic boats: *the Mapple Icon Edition and the Byerly Icon Edition*. Both editions will be built in very limited numbers and will be highly sought after by those who want the best Nautique has to offer. **Other progressive features for 2012 include:** a new state-of-the-art electrical system, upgraded Super Air Nautique interiors, new POLK Audio 5-channel digital amps, premium oversized mirror with extension bracket and much more.

1) NAUTIQUE LINC™ SYSTEM

Introducing the second generation of the Nautique LINC System with a full VGA screen that is over 20% larger than its predecessor. This new user-centric interface is intuitive and customizable with a wide variety of features that are accessible right at your fingertips. Enjoy the convenience of the pre-set factory settings or create multiple user profiles specific to your watersports needs.

2) NEW GEL COAT COLORS

There are a variety of vibrant gel coat colors available on any 2012 Nautique model including two new colors: Blue Metal Flake and Red Metal Flake.

3) KEYLESS IGNITION SYSTEM

Boat worry-free with the standard, custom-coded keyless ignition system.

4) FOLDING PLATFORM BRACKET

Easily lower the platform or completely detach it by removing the pins in the stainless steel brackets for effortless garage storage (*Ski Nautique 200 and Sport Nautique 200 models*).

5) PCM® XS 550 SUPERCHARGED ENGINE

With its performance-tuned exhaust, the XS 550 is the highest performance engine ever available in a Nautique. The XS Supercharged Engine combines extreme performance with legendary PCM reliability and durability.





COMMITTED TO THE CORE

In a sport that's constantly evolving we have always been focused on one purpose — building cutting-edge and progressive wakeboard boats. The Super Air Nautique series is dedicated to producing the world's best wake for wakeboarding, wakeskating and wakesurfing. You can feel the difference from the lip of the wake to the controls at the helm. The moment you get behind a Super Air Nautique, you will understand our passion and commitment to helping you reach your very best.

BYERLY ICON EDITION • SUPER AIR NAUTIQUE 210 • SUPER AIR NAUTIQUE 230







A man wearing sunglasses and a white shirt is driving a blue and red Nautique speedboat. The boat has a large wakeboard rack on the back and a prominent 'Nautique' logo on the side. The background is a clear blue sky and water.

SUPER AIR NAUTIQUE 210

Byerly Icon Edition

TEAM NAUTIQUE RIDERS

Scott Byerly and Brandon Thomas



ONLY BYERLY COULD INSPIRE IT **ONLY NAUTIQUE COULD BUILD IT**

The Super Air Nautique 210 - Byerly Icon Edition is the most progressive wakeboard boat ever created. The Byerly Icon offers fresh custom details including the Flight Control Tower with Z5 bimini and an all-new instrument panel featuring Nautique LINC. The dual metal-flake hull striping is one-of-a-kind. So is the huge reflective signature logo. The Byerly Icon will stand out above the rest and everyone will know you own the most customized wakeboard boat on the water.





LENGTH OVERALL: 21' 0" / 6.40 m

LENGTH WITH PLATFORM: 23' 3.5" / 7.10 m

LIFTING RINGS SPACING: 19' 7" / 5.97 m

BEAM: 98" / 2.49 m

DRAFT: 28" / .71 m

APPROX. DRY WEIGHT*: 3,900 lbs / 1,769 kg

FUEL CAPACITY: 40 gal. / 151.4 l

MAX. CAPACITY: 12 people or 1,850 lbs / 839 kg

HP RANGE: 343 to 450

GEAR REDUCTION RATIO: 1.48:1

FACTORY BALLAST CAPACITY: 906 lbs. / 411 kg

**Boat equipped with all factory installed options, minus fuel.*





SUPER AIR NAUTIQUE 210



TEAM NAUTIQUE RIDERS

Jeff McKee, Bob Soven, Tori Koch and Paulie Koch



THE REVOLUTION CONTINUES

No other boat in the history of the sport has ever made a greater impact. Since the day it hit the water, the Super Air Nautique 210 has set the standard for what a wakeboard boat is supposed to be. The 210's rampy wake and clean lip has created a following of riders who will settle for nothing less. For 2012, the 210 interior has all-new striping patterns, deeper pockets and more cup holders. The Super Air Nautique 210 is the official towboat of the Wake Games, the U.S. Masters and the WWA Wakeboard Nationals. Every year more people realize why this boat has stood the test of time as the revolution continues with every pull.





LENGTH OVERALL: 21' 0" / 6.40 m

LENGTH WITH PLATFORM: 23' 3.5" / 7.10 m

LIFTING RINGS SPACING: 19' 7" / 5.97 m

BEAM: 98" / 2.49 m

DRAFT: 28" / .71 m

APPROX. DRY WEIGHT*: 3,900 lbs / 1,769 kg

FUEL CAPACITY: 40 gal. / 151.4 l

MAX. CAPACITY: 12 people or 1,850 lbs / 839 kg

HP RANGE: 343 to 450

GEAR REDUCTION RATIO: 1.48:1

FACTORY BALLAST CAPACITY: 906 lbs. / 411 kg

**Boat equipped with all factory installed options, minus fuel.*





SUPER AIR NAUTIQUE 230



TEAM NAUTIQUE RIDERS

Shaun Murray, Shawn Watson, Jimmy LaRiche, J.D. Webb and Emily Copeland Durham



PUSHING BOUNDARIES

The Super Air Nautique 230 is on the boundary-pushing edge of wakeboarding and wakesurfing. It offers uncompromising comfort and performance while producing a well-defined pro-level wake that is unmatched anywhere in the world. The Team Edition features the new Nautique LINC, a revolutionary helm display encompassing a larger screen with enhanced functionality. Upgrade the performance of your 230 with our new optional XS 550 Supercharged engine by PCM. From the starting dock at the most prestigious events in the world to a perfect day on the lake with friends and family, the Super Air Nautique 230 pushes boundaries.





LENGTH OVERALL: 23' 1.5" / 7.05 m

LENGTH WITH PLATFORM: 25' 4.5" / 7.73 m

LIFTING RINGS SPACING: 22' .25" / 6.71 m

BEAM: 100.5" / 2.55 m

DRAFT: 29" / .74 m

APPROX. DRY WEIGHT*: 4,400 lbs / 1,996 kg

FUEL CAPACITY: 51 gal. / 193.1 l

MAX. CAPACITY: 16 people or 2,300 lbs / 1,043 kg

HP RANGE: 343 to 550

GEAR REDUCTION RATIO: 1.48:1

FACTORY BALLAST CAPACITY: 1,075 lbs. / 488 kg

**Boat equipped with all factory installed options, minus fuel.*





PUSHING THE LIMITS OF SKI BOAT DESIGN

Last year we celebrated the 50th Anniversary of Ski Nautique. It's a record of innovation unparalleled in the industry. We're proud of it. As proud as our customers are of their Ski Nautique boats. With every milestone comes a new challenge: to be even bolder and more inventive. For 2012, we teamed up with Andy Mapple and created the Ski Nautique 200 - Mapple Icon Edition. It commemorates Andy's unprecedented 14 Masters wins, and is a true testament to the power of collaboration and the desire to keep pushing the limits of ski boat design.

MAPPLE ICON EDITION • SKI NAUTIQUE 200 - OPEN BOW • SKI NAUTIQUE 200 - CLOSED BOW



SKI NAUTIQUE 200

Maple Icon Edition





TEAM NAUTIQUE SKIER
Andy Mapple



20 FEET OF TOURNAMENT SKI HISTORY **THAT ONLY NAUTIQUE COULD BUILD**

Introducing the Ski Nautique 200 - Mapple Icon Edition, available in open or closed bow. This exclusive showcase boat has been personally customized by Andy Mapple, commemorating his domination in tournament skiing. In true Mapple fashion, the boat features jet black metallic with victory red gel flares on the hullside and platform. Actual carbon fiber is inlaid in the hullside and highlighted throughout the interior. This is Mapple's signature boat and your chance to own 20 feet of tournament ski history.





LENGTH OVERALL: 20' 0" / 6.10 m

LENGTH WITH PLATFORM: 21' 10" / 6.65 m

LIFTING RINGS SPACING: 18' 10" / 5.73 m

BEAM: 95" / 2.41 m

DRAFT: 22" / .56 m

APPROX. DRY WEIGHT*: 2,850 lbs / 1,293 kg

FUEL CAPACITY: 29 gal. / 109.8 l

MAX. CAPACITY: 7 people or 1,450 lbs / 658 kg

HP RANGE: 343 to 450

GEAR REDUCTION RATIO: 1.23:1

**Boat equipped without all factory installed options, minus fuel*



SKI NAUTIQUE 200

Open Bow





TEAM NAUTIQUE SKIERS

Chris Parrish, Clementine Lucine and Nate Smith



PULL YOUR ENTIRE FAMILY TO THEIR **PERSONAL BEST EVERY DAY**

The Ski Nautique 200 - Open Bow is a unique blend of tournament-level performance, family-friendly design and seating for up to 9. It features our Optimal Surface Control (OSC) hull technology for superior tracking. The 200 is the official towboat of the U.S. Masters, Moomba Masters, the Big Dawg Series and the Canadian Waterski Nationals. The Ski Nautique has set more world records and broken more course records than any other boat on the market. It will pull every member of your family to their personal best.





LENGTH OVERALL: 20' 0" / 6.10 m

LENGTH WITH PLATFORM: 21' 10" / 6.65 m

LIFTING RINGS SPACING: 18' 10" / 5.73 m

BEAM: 95" / 2.41 m

DRAFT: 22" / .56 m

APPROX. DRY WEIGHT*: 2,850 lbs / 1,293 kg

FUEL CAPACITY: 29 gal. / 109.8 l

MAX. CAPACITY: 9 people or 1,450 lbs / 658 kg

HP RANGE: 343 to 450

GEAR REDUCTION RATIO: 1.23:1

**Boat equipped without all factory installed options, minus fuel*



SKI NAUTIQUE 200

Closed Bow





TEAM NAUTIQUE SKIERS

Scot Ellis, Natallia Berdnikava and Brooks Wilson



FOR THE WATER SKI PURISTS **AROUND THE WORLD**

The Ski Nautique 200 - Closed Bow is built for the water skiing purist, whether competing at the tournament level or shortening the rope and going for a personal best. It is the ideal three-event ski boat with the softest wake for slalom skiing at all speeds, a defined trick table and a powerful jump pull. Nothing compares to the exceptional performance and handling of the 200. It offers everything you need to get the most out of a slalom course. Anything less, you better pass.





LENGTH OVERALL: 20' 0" / 6.10 m

LENGTH WITH PLATFORM: 21' 10" / 6.65 m

LIFTING RINGS SPACING: 18' 10" / 5.73 m

BEAM: 95" / 2.41 m

DRAFT: 22" / .56 m

APPROX. DRY WEIGHT*: 2,850 lbs / 1,293 kg

FUEL CAPACITY: 29 gal. / 109.8 l

MAX. CAPACITY: 7 people or 1,450 lbs / 658 kg

HP RANGE: 343 to 450

GEAR REDUCTION RATIO: 1.23:1

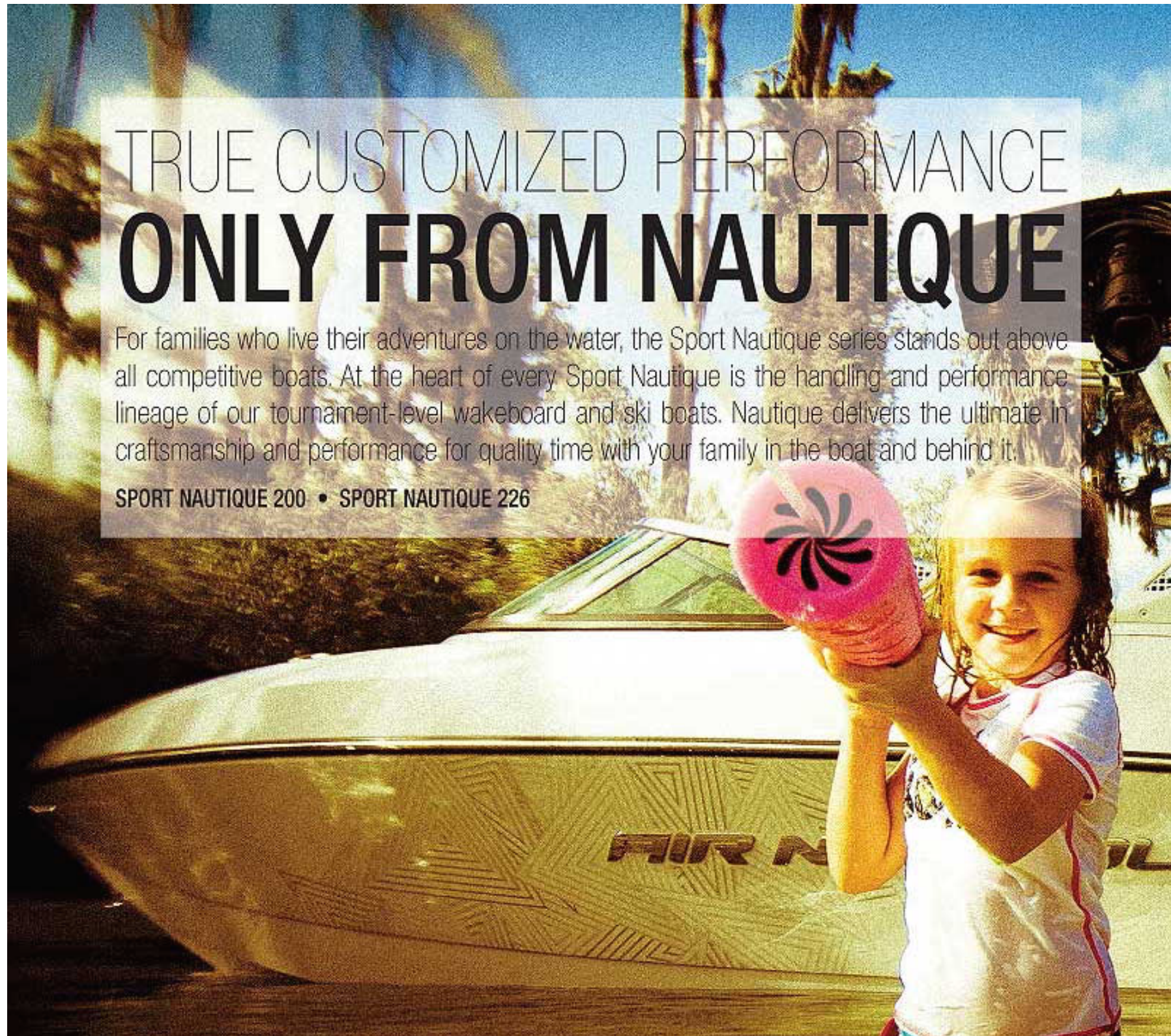
**Boat equipped without all factory installed options, minus fuel.*



TRUE CUSTOMIZED PERFORMANCE **ONLY FROM NAUTIQUE**

For families who live their adventures on the water, the Sport Nautique series stands out above all competitive boats. At the heart of every Sport Nautique is the handling and performance lineage of our tournament-level wakeboard and ski boats. Nautique delivers the ultimate in craftsmanship and performance for quality time with your family in the boat and behind it.

SPORT NAUTIQUE 200 • SPORT NAUTIQUE 226







SPORT NAUTIQUE 200





THE MOST VERSATILE BOAT FOR THE ENTIRE FAMILY

Around the globe, the Sport Nautique 200 has advanced a passion for watersports like nothing else on the water. It can ski like a tournament boat, create a rampy wake for wakeboarding and produce a long open-face wake for wakesurfing. The 200 is the only V-drive boat in its class, maximizing space and comfort. No compromises, no shortcuts. As the most versatile boat on the water, the Sport Nautique 200 moves your family's watersports experience forward.





LENGTH OVERALL: 20' 0" / 6.10 m

LENGTH WITH PLATFORM: 21' 10" / 6.65 m

LIFTING RINGS SPACING: 18' 9" / 5.72 m

BEAM: 95" / 2.41 m

DRAFT: 23.5" / .60 m

APPROX. DRY WEIGHT*: 3,250 lbs / 1,474 kg

FUEL CAPACITY: 30 gal. / 113.6 l

MAX. CAPACITY: 10 people or 1,600 lbs / 726 kg

HP RANGE: 343 to 409

GEAR REDUCTION RATIO: 1.48:1

FACTORY BALLAST CAPACITY: 736 lbs. / 334 kg

**Boat equipped with all factory installed options, minus fuel.*





SPORT NAUTIQUE 226





POWER ELEGANCE STYLE

IT'S ALL YOURS

The Sport Nautique 226 satisfies your family's need for all kinds of wakes and all kinds of space. Enjoy a spacious floor plan that seats up to 15, plus storage that's plentiful and convenient. Behind the 226 you'll discover a wake with a long transition that's suitable for a variety of watersports. When open water calls for a family cruise, the world-class Nautique performance and handling add to the luxury. The Sport Nautique 226 lets you do it all with power, elegance and style.





LENGTH OVERALL: 22' 7" / 6.88 m

LENGTH WITH PLATFORM: 24' 10" / 7.57 m

LIFTING RINGS SPACING: 20' 10" / 6.35 m

BEAM: 98" / 2.49 m

DRAFT: 31" / .79 m

APPROX. DRY WEIGHT*: 4,550 lbs / 2,064 kg

FUEL CAPACITY: 56 gal. / 212 l

MAX. CAPACITY: 15 people or 2,150 lbs / 975 kg

HP RANGE: 343 to 409

GEAR REDUCTION RATIO: 1.48:1

FACTORY BALLAST CAPACITY: 1,020 lbs. / 463 kg

**Boat equipped with all factory installed options, minus fuel.*



COASTAL
EDITION



NAUTIQUE

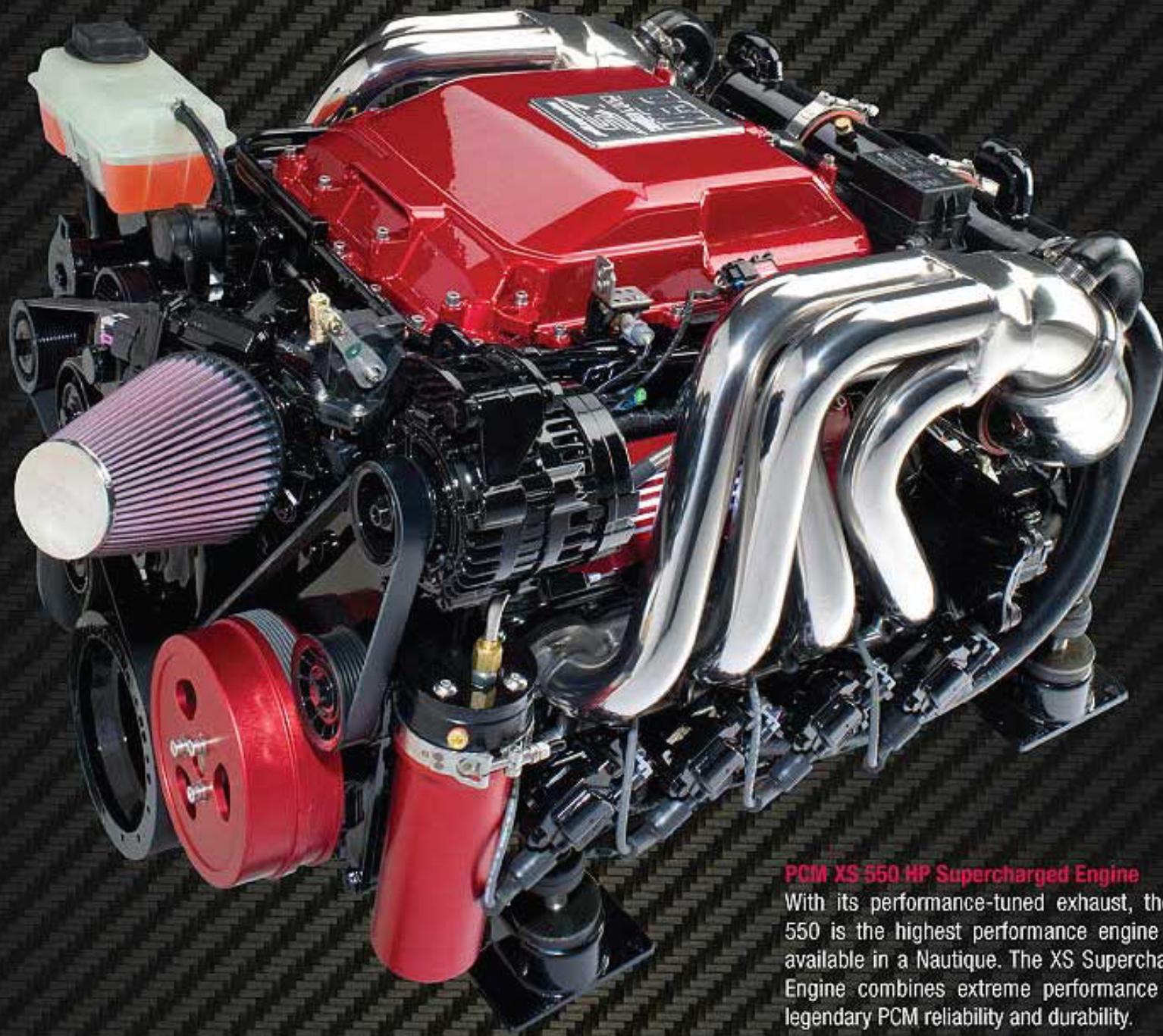


TOTAL WATERSPORTS CAPABILITY

SALTWATER PROTECTION AT ITS BEST

Our Coastal Edition series of boats are equipped to effectively resist saltwater corrosion while maintaining premium performance capabilities. Top-of-the-line components include a sealed steering cable, stainless steel steering tube with lubrication provision, zinc sacrificial anodes, stainless steel gas shocks, anodized aluminum structural components and a corrosion-resistant wiring harness. It's the total watersports package with added saltwater protection.





PCM XS 550 HP Supercharged Engine

With its performance-tuned exhaust, the XS 550 is the highest performance engine ever available in a Nautique. The XS Supercharged Engine combines extreme performance with legendary PCM reliability and durability.



LEADING THE INDUSTRY

IN POWER AND PERFORMANCE

For 35 years, Nautique has partnered with PCM®, creating the most powerful partnership on the water. PCM is our exclusive power provider, delivering unbeatable performance, outstanding durability and offering features that meet the demanding needs of our engineers, our dealer network and most importantly, our customers.



EX 343 HP Catanium CES

The EX 343 is designed for all watersports applications. It's a 5.7 liter workhorse rated at 343, with all the famous PCM features including outstanding performance with maximum durability.



ZR 409 HP Catanium CES

Pound for pound, the ZR 409 is a tried and true performer in the watersports industry. Rated at 409, the ZR 409 is calibrated for the performance requirements of high-end watersports applications. It's the ultimate choice for premium power.



ZR 450 HP Catanium CES

This new engine is based on the proven performance of the ZR 409, enhanced to provide greater torque and horsepower across the power band.



Crusader Watersports Series

The CWS is included in the Nautique Coastal Edition. Available in 343 HP and 409 HP, these engines include Freshwater Cooling System, stainless steel components on the PCM mounting system and the CWS SURE COAT protective coatings are designed to successfully withstand the rigors of saltwater use.

AT THE FOREFRONT OF INNOVATION

The Sport and Super Air Nautique Team Edition boats feature the second generation of the Nautique LINC System with a full VGA screen that is over 20% larger than its predecessor. This new user-centric interface is intuitive and customizable with a wide variety of features including ballast, multiple user profiles and much more right at your fingertips.



Ballast – View ballast levels in a 3-D graphic format and easily fill and drain each tank with the touch of a button.

GPS – Now you can integrate the navigational map through the home screen for easy access to set speed, volume and user profiles.

User Profiles – Select one of the factory-default user profiles for the watersport activity of your choice or create your own profile to completely customize your ride.



Byerly Icon Edition - Nautique LINC Home Screen



Nautique LINC Home Screen

AT THE HELM OF TECHNOLOGY

The 2012 Ski Nautique Team Edition boats features the all-new LINC system with a 7-inch LCD display and 14 functional buttons to ensure immediate access to all menus and options. Featured on the left, the home screen allows you a multitude of choices to tailor the screen to your preference while also integrating key features including speedometer, fuel level, depth finder and more.



Zero Off™ River Mode – Enjoy the integrated "River Mode" feature which allows the adjustable offset to compensate for river current and direction when pulling a skier.

User Profile – This display features six factory user profiles, plus the ability to create up to ten custom profiles.

Switching – Now access your boat's accessories effortlessly through LINC plus enjoy the overhead view of your model highlighting the location of the auxiliary inputs, USB and more.

DESIGN YOUR NAUTIQUE JUST THE WAY YOU WANT IT

Build your ideal boat, with hundreds of premium color combinations and eight different models to choose from.

LOG-ON TO DESIGNYOURNAUTIQUE.COM AND MAKE YOUR DREAMS A REALITY.

SUPER AIR NAUTIQUE SERIES



BYERLY ICON EDITION 210



SUPER AIR NAUTIQUE 210



SUPER AIR NAUTIQUE 230

SKI NAUTIQUE SERIES



MAPLE ICON EDITION 200



SKI NAUTIQUE 200 - OPEN BOW



SKI NAUTIQUE 200 - CLOSED BOW

SPORT NAUTIQUE SERIES



SPORT NAUTIQUE 200



SPORT NAUTIQUE 226

**SILVER
CLOUD**

(Standard Hull
and Deck Color)

**VICTORY
RED**

**FURY
RED**

**CRUSH
ORANGE**

**THERMAL
YELLOW**

**MASTERS
BLUE**

**VAPOR
BLUE**

**MIDNIGHT
BLUE**

**SUBLIME
GREEN**

**CANYON
MIST**

**TITANIUM
GREY**

**ONYX
BLACK**

**SILVER
METAL
FLAKE**

**GUN
METAL
FLAKE**

**RED
METAL
FLAKE**

NEW

**BLUE
METAL
FLAKE**

NEW

FIND EVERYTHING YOU NEED AT: NAUTIQUE.COM



BE RESPONSIBLE. WSIA Watersports Responsibility Code

Be aware that there are elements of risk in boating, skiing and riding that common sense and personal awareness can help reduce. Know your ability level and stay within it. TO INCREASE YOUR ENJOYMENT OF THE SPORT FOLLOW THE "WATERSPORTS RESPONSIBILITY CODE"

IT IS YOUR RESPONSIBILITY TO:

- Familiarize yourself with all applicable laws, the risks inherent in the sport and the proper use of equipment
- Know the waterways where you will be skiing or riding
- Do not ski or ride in shallow water, near shore, docks, pilings, swimmers or other watercraft. Boaters are responsible for the wake they leave behind and any damage caused by that wake
- Always have a person other than the boat driver as an observer and agree on hand signals before starting
- Always wear a U.S. Coast Guard Type III (PFD) life jacket
- Read your owner's manual and inspect your equipment prior to use
- Ski or ride within your limits. Always ski or ride in control and at speeds appropriate for your ability
- Always turn ignition off when anyone is near watercraft power drive unit
- Carbon Monoxide (CO) poisoning from engine exhaust may cause injury or death
- Never "platform drag" or touch a swim platform while the engine is running
- Do not operate watercraft, ski or ride under the influence of alcohol or drugs
- Respect the waterways that we have access to and acknowledge that water is a precious resource that we are allowed to use—water use is not a right, it can be taken away

FOR MORE INFORMATION LOG ON TO: WWW.WSIA.NET // Please remember to never operate a boat or any other vehicle while impaired.





NAUTIQUE

14700 Aerospace Parkway Orlando, FL 32832 USA

1-800-346-2092 www.nautique.com



FSC



Get the free mobile app for your phone
<http://gettag.mobi>