

CORRECT CRAFT^{INC.}
1989



The Certainty of Excellence

A most exciting product development is on course this 1989 Correct Craft model year. Pushing the state of the boat building art forward and advancing to new performance levels, Correct Craft introduces the SP drive package, the most significant inboard propulsion advancement in 30 years.

The result is that 1989 Correct Craft boats are quieter, more powerful and more fuel efficient than ever before in our company's 64 year history. While the Correct Craft SP package is innovative and unparalleled, we remain committed to manufacturing excellence, an attribute upon which our respected reputation is based.

Correct Craft's dedication to quality, performance and value was born six decades ago and remains true today. The results are measured "On the Waters of the World" by our customers who know the satisfaction and enjoyment Correct Craft boats provide.



Walter N. Meloan
President/CEO

Ephesians 3:20-21 "To Him who is able
to do exceeding abundantly beyond all
that we ask or think, according to the
power that works within us,
to Him be the glory."



Contents:

Engine	4 - 5
Craftsmanship	6 - 7
Ski Nautique 2001	8 - 9
Barefoot Nautique 2001	10 - 11
Martinique BowRider	12 - 13
Martinique ClosedBow	14 - 15
Fish Nautique	16 - 17
Trailers	18 - 19
Color Specifications	20 - 21
Features	22 - 24

The Drive to Excel

The velvet smoothness of the exhaust belies the new thunder lurking under the improved motor box. Working in close concert with Pleasurecraft Marine Engines and Vernay Mufflers, Correct Craft has unleashed the most powerful development in ski drive technology in over three decades. The Correct Craft SP package is an engineering advance which delivers impressive increases in performance while significantly suppressing exhaust noise and improving fuel efficiency.

Offered on the 351 c.i.d. engine, the Correct Craft SP package delivers 20 percent more torque and 10 percent more horsepower to the propeller, a 6 percent decrease in fuel consumption and an amazing 50 percent reduction in exhaust noise. The advanced 1.23 to 1 ratio transmission delivers the best of all worlds—better acceleration, top end

and fuel efficiency. The new transmission enables the engine to mount level in the boat, optimizing performance of carburetion and intake systems. The transmission also allows the engine to turn standard automotive left hand rotation while delivering a right hand rotation to the prop. Ski boats often have only the driver on board, and the torque of right hand prop rotation balances the driver's weight for a smooth, stable ride.

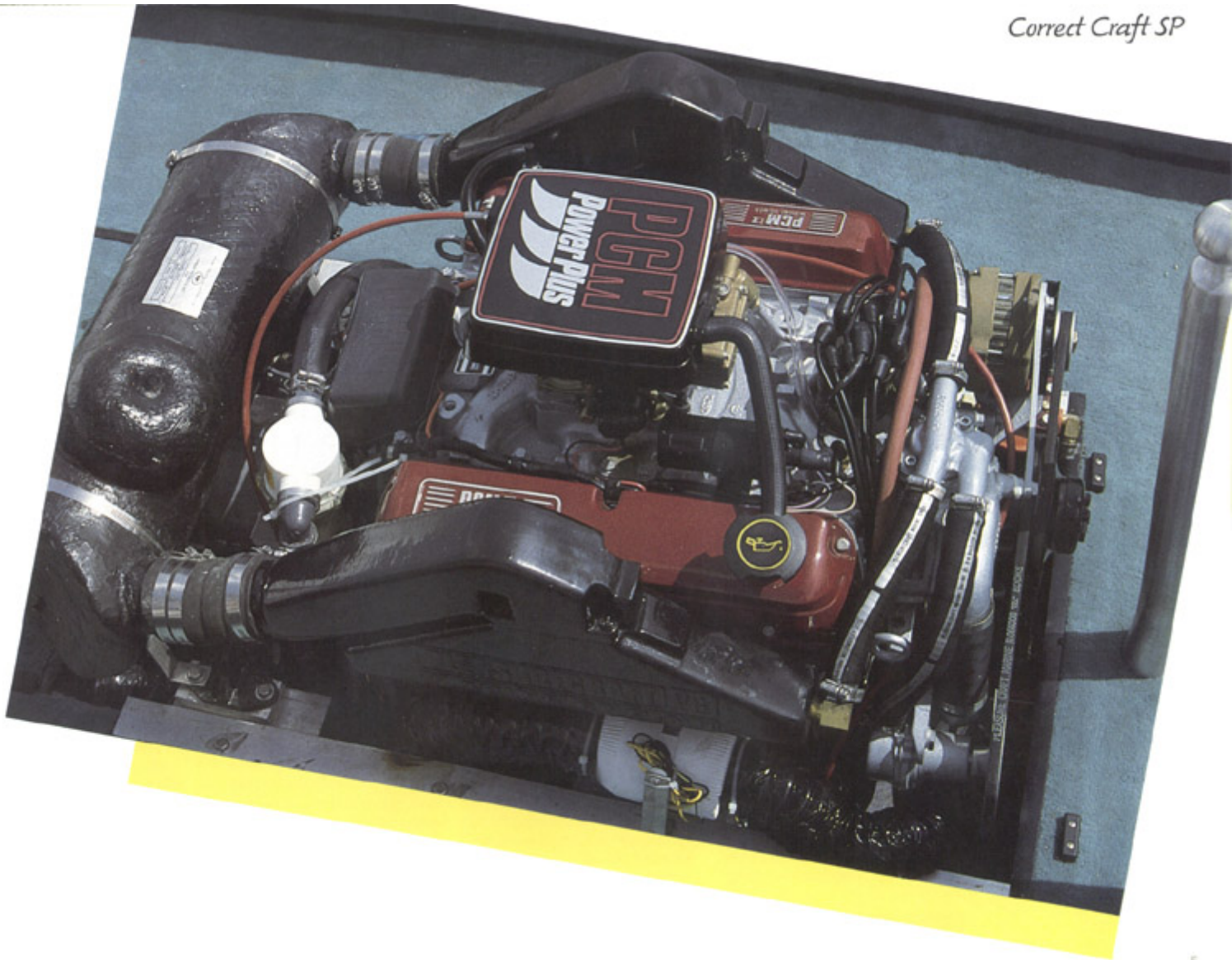
The crowning achievement of the Correct Craft SP package is that it comes with its own "Good Neighbor Policy"—a sophisticated muffler system which cuts engine exhaust noise in half with no reduction in horsepower. With less noise and more economy, Correct Craft SP expands your capacity for serious skiing enjoyment.



These graphs dramatically illustrate the impressive noise suppression of the Correct Craft SP package. The tests were conducted against four popular 1988 tournament inboards in conditions duplicating normal lake operation. To measure the noise impact at the shoreline two tests were run. First, the boats passed by 75 feet from the sensing instrument at speeds of 17, 30, and 36 miles per hour. The second test measured sound levels of the boats as they accelerated away from the sensing instrument. Each boat idled out from the sensing instrument until it was 360 feet away; then the driver accelerated at full throttle to 36 miles per hour. The sensing instrument measures noise levels in microbars, and for comparison purposes consider that ambient lake sounds register .08, normal conversation is .2, average traffic noise is .8, while heavy city traffic hits 2.0



Correct Craft SP



Tomorrow's Technology, Yesterday's Craftsmanship

For more than 60 years, Correct Craft boats have been constructed with a serious dedication to both advancement and tradition. Our boat builders have balanced the push into new technological frontiers with an enduring concern for handmade fit, feel and overall quality.

Today, space age materials and techniques are skillfully applied with the masterful touch of genuine craftsmen. Generous applications of an advanced gel coat improve the durability, longevity and color retention of the finish. Sophisticated resin compounds enhance the lamination process. Specialized light weight, woven roving, developed for Correct Craft by Owens-Corning Fiberglas Corp., is used for exceptional strength. Fiberglass encapsulated wood stringers provide better sound absorption, vibration dampening and solid engine mounting, and are

bonded to the hull across their full length. Seat frames are rotocast for weight savings and long life. Even upholstery materials are high tech—a non-woven back vinyl with better bias, superior flex and improved resistance to the elements.

Correct Craft's tradition of quality craftsmanship demands that we never rush headlong into the latest industrial "development." Every technological advancement is thoroughly researched, tested and evaluated before being incorporated into our manufacturing process. We remain proud craftsmen, building boats by hand and backing them with our hard-earned reputation. Our tradition of craftsmanship is your assurance that each and every technological advancement at Correct Craft is backed by the certainty of excellence.



Lamination.



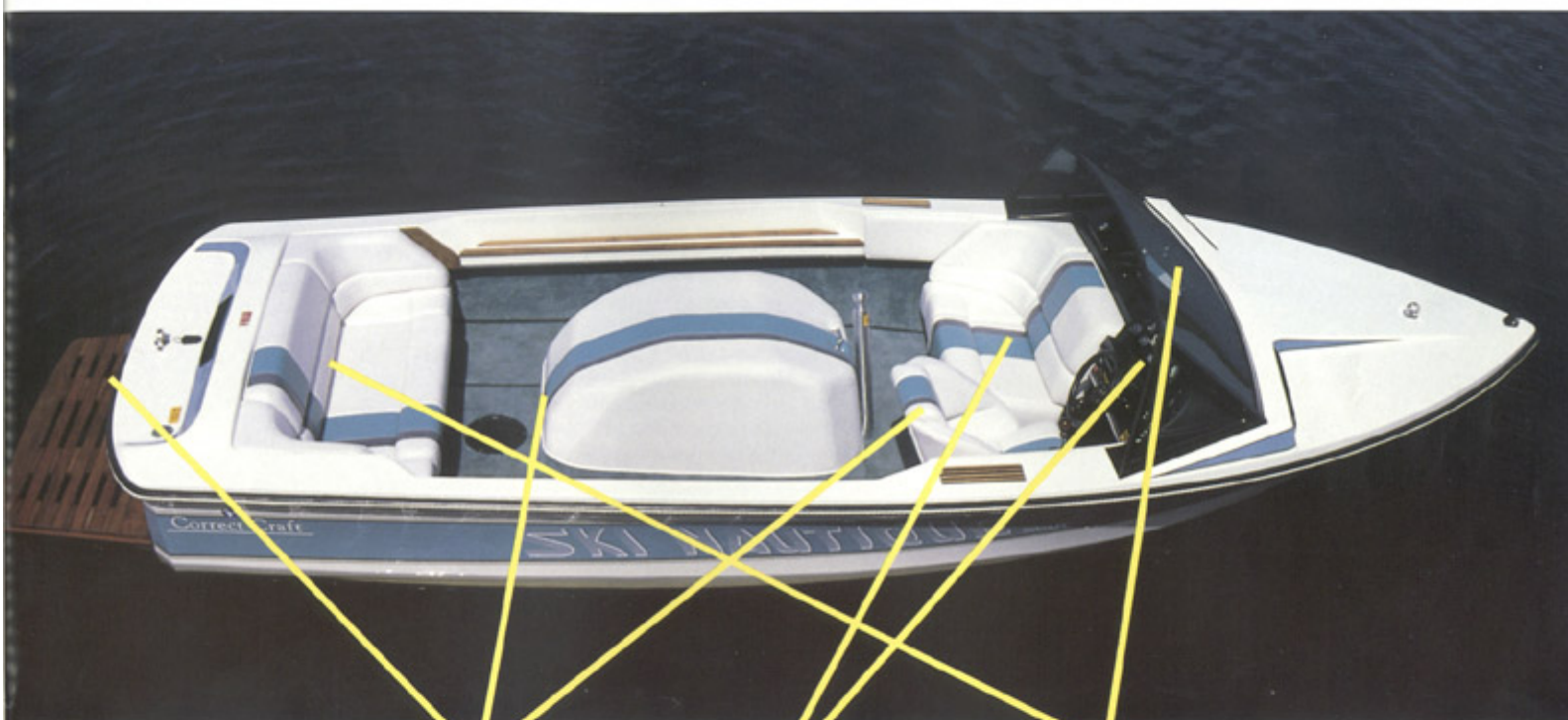
Trailer Production.



Underwater Gear Installation.



Vinyl Preparation.



Quality details are the true measure of craftsmanship. From choice of materials to installation technique, Correct Craft does all the little things right.

Transom ski tow rings – an alternative to the ski pole when passengers are aboard.

Hidden motor box hinges – no protruding hardware for unwary toes to find.

Rotocast plastic seat frames – greater strength, durability and weather resistance than plywood.

Top quality vinyl with nylon stitching – heavy-duty wear, luxurious comfort, superior color retention and outstanding rot resistance.

Advanced command center – well engineered dash design, complete VDO instrumentation, lockable glove box and optional stereo.

Superior windshield design – big enough to do its real job – shield the driver from the wind.

The classic, comfortable Correct Craft ride – from sophisticated seat design to vibration absorbing wood stringers, every effort is given to passenger comfort.

Number One Tow Boat of Choice

When a major national magazine brought together the top inboard ski boats in the land for an independent performance test, the results showed what competitive skiers have known for years—the Ski Nautique 2001 is the best there is, pure and simple.

The Ski Nautique 2001 is a thoroughbred with a bloodline that traces to the very beginnings of the sport of water skiing. For 22 consecutive years Ski Nautique has pulled at the National Water Ski Championships. Participation at the Masters Water Ski Championship spans 15 straight years.

Correct Craft boats were the selection of choice at more American Water Ski Association tournaments than any other tow boats over the past two seasons.

And for their countless hours of training and tournament preparation, close to 60 percent of all Nationals competitors surveyed cited Ski Nautique as their tow

boat used for practice—that's about 25 percent more than the next closest inboard ski boat manufacturer.

On the water, the Ski Nautique 2001 truly knows no real competition. The new Correct Craft SP package boosts performance, reduces noise and improves fuel economy. The classic Ski Nautique 2001 hull configuration tracks steady, stable and true. The boat is extremely nimble, with crisp, sure, responsive handling. VDO instrumentation is precise. The interior is roomy, quiet and comfortable. Whether skiing for a Masters title or enjoying a family weekend on the water, the Ski Nautique 2001 is the clear choice for the handmade quality, competition grade performance and superior value.



Cooler, Bow Storage, Ski Pole, Driver's Seat, Dash, Storage Pouch.



Stern Seat Storage.



Bow Storage

Ski Nautique 2001

WHITE HULL/TEAL ACCENT/GRANITE TRIM



SPECIFICATIONS
Construction—Fiberglass
LOA—18'9"
Beam—84"
Draft (not under power)—24"
Approximate Weight (dry)—2400 lbs.
Lifting Rings (between centers)—16'7"
Fuel Capacity—27 gal.

The Bare Facts

Throughout the entire history of the National Barefoot Water Ski Championships, over 80 percent of those competitive skiers eligible to choose their tow boat for the wake slalom and trick events selected the Barefoot Nautique. Such dominance of a sport is the direct result of superior performance. The Barefoot Nautique 2001 delivers the power, steady track and quality wake conditions that serious barefooters demand.

Born of Correct Craft's on-going commitment to the sport of water skiing, the Barefoot Nautique 2001 features a hull configuration specially engineered for the unique requirements of the barefooter. The stringer system is strengthened using all-fir construction encapsulated in fiberglass reinforced thermo set resin. As in all Correct Craft boats, the high performance engine is monitored by a sophisticated three-level system in

which gauges, indicator lights and warning buzzers are computer controlled to advise the driver of any critical change in vital engine functions.

A tremendously capable performer, the Barefoot Nautique 2001 also features an abundance of creature comforts. The interior is spacious, quiet and comfortable. Storage space abounds. Precision VDO instrumentation reports all vital data. And, the driver is in complete command with handling that is responsive, crisp and sure. The Barefoot Nautique 2001 is a one of a kind performance machine—truly the dominant species of its sport.



Dual Tournament Speedometers. VDO Instrumentation. Stereo System.



Transom Ski Tow Ring In Use.



Lockable Glove Box.



Transom Ski Tow Ring. Boarding Platform.



Dual Bucket Seats.

Barefoot Nautique 2001

WARM GRAY HULL/YELLOW ACCENT/GRANITE TRIM



SPECIFICATIONS

Construction—Fiberglass

LOA—19'

Beam—84"

Draft (not under power)—26"

Approximate Weight W/351—2450 lbs.

Approximate Weight W/454—2650 lbs.

Lifting Rings (between centers)—16'7"

Fuel Capacity—27 gal.

A Family Tradition

Apply Correct Craft's tradition of hand built quality and competition grade performance to the needs of the American family and the result is truly beautiful—the Martinique BowRider.

With generous interior room, the 20' Martinique combines luxury for six with all out skiing excitement. Easily pulling two barefoot skiers with four passengers on board, this bowrider is born to run.

Drawing upon the competition experience of the Ski Nautique 2001, the Martinique hull further adapts the design to meet the family needs of carrying larger loads across open water. The deep-vee hull with 20-degree deadrise and running strakes provides nimble handling, a comfortable ride and stable pull for skiing. The advanced Correct Craft SP package delivers an added level of power, speed, quiet and economy.

Inside, the Martinique creates an inviting environment for hours of fun on the water. The rich tradition of hand crafting is evident in choice materials, gracious seating, abundant storage and masterful attention to detail. Easily accessible stowage compartments keep skis, gear and refreshments out of sight yet fingertip convenient. Precision VDO instrumentation monitors vital functions and an impressive sound system is optional. Martinique proves that performance, style, quality and value do indeed run in the family.



Storage Port and Starboard Under Bow Walk-Through Area.



Lockable Glove Box.



Ski Pole.



Bow Seating.



Windshield With Hinged Walk-Through.



Transom Ski Tow Ring.

Martinique BowRider

WARM GRAY HULL/FIRE RED TOP ACCENT/WHITE BOTTOM ACCENT



SPECIFICATIONS

Construction—Fiberglass
LOA—20'2"
Beam—94"
Draft (not under power)—33"
Approximate Weight W/351—3050 lbs.
Approximate Weight W/454—3240 lbs.
Lifting Rings (between centers)—18'8"
Fuel Capacity—32 gal.

Lady of the Lakes

Her lines are sleek, clean, elegant. She glides across the water with style, grace and ease. Her spirited soul exudes quiet confidence. She excites the imagination and delights the senses. A lady of obviously fine breeding, the Martinique ClosedBow is a classic beauty with the competitive heart of a true champion.

Featuring a smooth, closed bow configuration and abundant power, the Martinique is the ideal big lake cruiser. The hull is engineered for a comfortable ride, responsive handling and exciting skiing. The new Correct Craft SP package reduces engine noise by an impressive 50 percent while providing significant increases in torque, horsepower and efficiency.

The Martinique features the Correct Craft details of master craftsmanship. Hull and deck are precisely mated with stainless steel screws, aluminum rivets, resin and silicone bond.

The fit is secure, exact, enduring. The prop and rudder are milled to tolerance from Nibral bronze. The instrumentation is strictly VDO, and a sophisticated stereo system is optional. Interior appointments are handsome, with generous seating, abundant storage and ample room to stretch out. In all, the Martinique is a most impressive lady of the lakes—a stellar performer whose beauty is much more than skin deep.



Storage Under Stern Seat.



Storage Under Floor.



Windshield Wing Vent.



Adjustable Passenger Seat With Swivel. Deluxe Padded Motor Box With Hidden Hinges. Teak Boarding Platform. Drink Holders.



Dash Area. Stereo System. Drink Holders. Lockable Glove Box.



Tilt Steering Wheel.

Martinique ClosedBow

WHITE HULL/CRANBERRY TOP ACCENT/CHARCOAL BOTTOM ACCENT



SPECIFICATIONS

Construction—Fiberglass

LOA—20'2"

Beam—94"

Draft (not under power)—33"

Approximate Weight W/351—2950 lbs.

Approximate Weight W/454—3140 lbs.

Lifting Rings (between centers)—18'9"

Fuel Capacity—32 gal.

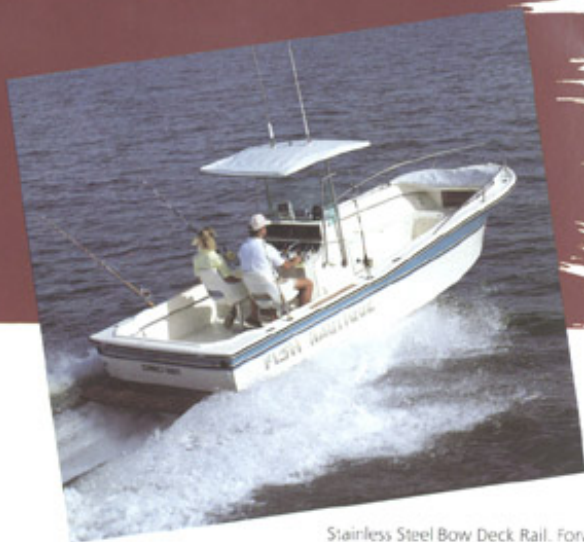
The Spirited Sportsman

Designed for serious fishermen, the Fish Nautique gets you to where the action is with the confident power of classic inboard drive and a big deep-vee hull that cuts smoothly, surely through the swells. The center console opens interior space, establishing a well-engineered command center with room for radio, Loran and added instrumentation. The 85-gallon fuel capacity is generous, providing comfortable cruising range.

The Fish Nautique thrives in open water. The high performance inboard drive system delivers positive throttle response, reassuring reliability and easy maintenance. Handling is crisp, sure and precise.

The Fish Nautique is a spirited blue water cruiser with the horsepower to move smartly out to sea. Idling down, the Fish Nautique is perfect for quiet trolling and provides a stable fishing platform.

In accordance with the proud Correct Craft tradition, the Fish Nautique has the fit, feel and attention to detail of a finely hand crafted boat. Generous compartments store gear easily and keep essential equipment within quick reach. Rugged construction ensures durability. Basic flotation exceeds all requirements. Cleats and fittings are all stainless steel. Prop and rudder are precision milled of Nibral bronze. VDO instrumentation provides accurate information on vital functions. Rod holders, racks, drink holders, radio box and solid teak appointments are strategically placed. The Fish Nautique is a well-outfitted offshore cruiser with the spirited performance to deliver years of fishing enjoyment.



Stainless Steel Bow Deck Rail. Forward Rope Locker. Innerliner With Three Lockable Storage Bins.



Bow Overview.



New Round Cornered Live Well and Catch Well.



Center Console With Built-In Lockable Teak Radio Box.



Stainless Steel Bow Deck Rail With Teak Pulpit.

Fish Nautique

WHITE HULL/TEAL TOP ACCENT/CHARCOAL BOTTOM ACCENT



SPECIFICATIONS

Construction—Fiberglass
LOA—23'
Beam—96"
Draft (not under power)—30" single
Approximate Weight (dry)—4000 lbs.
Lifting Rings (between centers)—20' 9"
Fuel Capacity—85 gal.

Boats shown rigged for photography. Many options shown not available through Correct Craft. Check local dealers for prices.

Complete in Every Detail

The true measure of customer satisfaction reaches deep, touching even the smallest details and reflecting every aspect of the boating experience. Correct Craft sincerely believes that details do indeed make the difference. That's why our boats are hand crafted with choice materials. That's also why we are one of only a very few manufacturers who design and build their own trailers. After all, how good can your boating experience be if you have problems getting your boat to and from or in and out of the water?

Correct Craft trailers complete your boating package and are superior in every detail. The frame is rugged, welded and engineered especially for the inboard design of our boats. Bunks cradle the hull snugly, securely, exactly. Drive on/drive off loading is convenient. On the road, the trailers ride easily.

All trailers are rated to carry loads in excess of the boat weight they were designed for, and feature surge brakes for towing. A special free-backing plate on the surge brakes allows uphill backing of the trailer. Wheel bearings are sealed for longer life. Axles are solid—not hollow. Stainless steel beauty rings highlight E-coated wheels with baked-on powder paint. Winch hardware is heavy duty and a unique turnbuckle system secures to the bow eye for travel.

Correct Craft takes great pride in delivering a very complete boating package which provides uncompromising quality, performance and value right down to the smallest detail.



Ski Nautique 2001 Trailer.



Spare Tire. Winch. Turnbuckle.



Fender. Wheel Bearing. Wheel.



Fish Nautique Trailer.

States have varying laws about trailer tie-downs. Learn what your local and state laws are about trailer tie-downs before ordering your Correct Craft trailer. Tie-downs are equipped on all Correct Craft trailers, however, you are responsible for buying and installing straps.

CAUTION: TRAILER FENDERS ARE SLIPPERY WHEN WET. USE EXTREME CARE WHEN STEPPING ON THEM TO PREVENT PERSONAL INJURY.

Model Number	Description	Gross Vehicular Weight Rating ¹	Maximum Load Carrying Capacity ²
3	Ski Nautique 2001	4,660 lbs.	3,710 lbs.
4-DV	Barefoot Nautique 2001 Martinique BowRider Martinique ClosedBow	4,660 lbs.	3,660 lbs.
4-T-DV	Barefoot Nautique 2001 Martinique BowRider Martinique ClosedBow	6,000 lbs.	4,550 lbs.
5-T-DV	Fish Nautique	6,000 lbs.	4,500 lbs.

¹ Gross Vehicular Weight Rating is the maximum certified capacity of the boat, trailer and all additional equipment (fuel, battery, gear, etc.).

² Maximum Load Carrying Capacity is the weight of the boat and all additional equipment (fuel, battery, gear, etc.), excluding the weight of the trailer.

Trailers



MODEL NUMBER	DESCRIPTION	BOW BUMPER	LIGHTS	DOLLY JACK	FENDERS	LOADING EQUIPMENT	SAFETY CHAINS	SPARE TIRE	SURGE BRAKES	2" TRAILER COUPLER	TRAILER WEIGHT	GALVANIZING	PIN STRIPPING
3	SKI NAUTIQUE	NA	STD	STD	STD	STD	STD	OPT	STD	STD	950 LBS	OPT	STD
4-DV	BAREFOOT NAUTIQUE, MARTINIQUE BOWRIDER AND CLOSED BOW	NA	STD	STD	STD	STD	STD	OPT	STD	STD	1000 LBS	OPT	STD
4-T-DV*	BAREFOOT NAUTIQUE, MARTINIQUE BOWRIDER AND CLOSED BOW	NA	STD	STD	STD	STD	STD	OPT	STD*	STD	1450 LBS	OPT	STD
5-T-DV*	FISH NAUTIQUE	STD	STD	STD	STD	NA	STD	OPT	STD*	STD	1500 LBS	OPT	STD

DV - DEEP VEE
T - TANDEM
STD - STANDARD
OPT - OPTIONAL
NA - NOT AVAILABLE
*SURGE BRAKES ON
FRONT AXLE ONLY.

GEL COATS BASE



1. White
2. Warm Gray

ACCENTS



1. Yellow
2. Charcoal
3. Cranberry
4. Midwatch Blue
5. Teal
6. Fire Red
7. Ice Blue
8. Black

Side graphics are available in the following colors:
Ski Nautique/Barefoot Nautique/Fish Nautique—

1. White
2. Black
3. Light Gray
4. Light Blue
5. Light Red
6. Yellow

Martiniques—

A gray hull will receive white with a black accent.
A white hull will receive gray with a black accent.

Due to the differences between available printing process inks and the actual materials used in Correct Craft boats, the colors in this brochure are similar representations and not exact reproductions of the final product.

Color Specifications

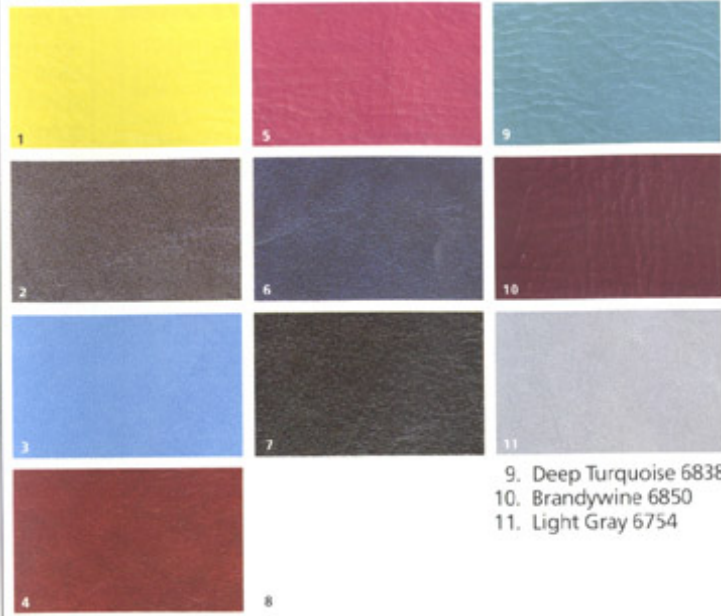
CARPETS



1. Teal 246
2. Navy 820
3. Burgundy 822
4. Black 24

5. Charcoal 10
6. Fire Red 1177
7. Light Blue 730

VINYLS

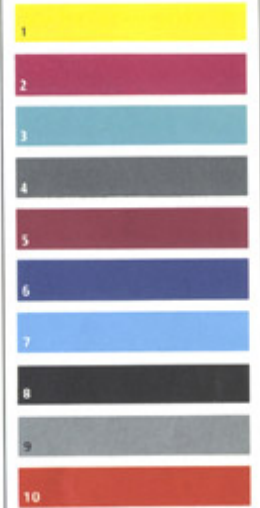


1. Sunny Yellow 6891
2. Charcoal 6631
3. Aqua Blue 6755
4. Signal Red 6756

5. Magenta 6899
6. Marine Blue 6761
7. Raven Black 6642
8. Snow White 6764

9. Deep Turquoise 6838
10. Brandywine 6850
11. Light Gray 6754

TAPES



- 11
1. Yellow 612
2. Fuchsia 740
3. Dark Bahama 691
4. Granite 669
5. Cranberry 260
6. Dark Blue 667
7. Ice Blue 646
8. Black 623
9. Light Gray 656
10. Red 625
11. White 635



Tory Baggiano, Correct Craft Ski Team Member.
Bronze Medal Winner, Men's Tricks, 1987 World
Water Ski Championships
Ranked Number Two in The World, Men's Tricks.

Ski Nautique 2001

STANDARD EQUIPMENT

ADJUSTABLE DRIVER'S SEAT
BASIC FLOTATION
BATTERY BOX LID WITH
TOOL BOX
BILGE VENT SYSTEM WITH
BLOWER
BOW STORAGE
DELUXE LOVE SEAT WITH
COOLER
DELUXE PADDED MOTOR BOX
WITH HIDDEN HINGES
DUAL TOURNAMENT
SPEEDOMETERS
ELECTRIC BAILER WITH
AUTOMATIC ELECTRONIC
SENSING
ELECTRIC HORN
ELECTRICAL SYSTEM 12V
WITH CIRCUIT BREAKERS &
INDICATOR LIGHTS
ENGINE WARNING SYSTEM
FINS (3)
FUEL CHECK VALVE
(ANTI-SIPHON)
FUEL FILTER/WATER
SEPARATOR
IN-DASH DRINK HOLDERS
LARGE MIRROR
LOCKABLE GLOVE BOX
MARINE CARPET

NAVIGATIONAL LIGHTING
OIL DRAIN KIT
PCM POWER PLUS 1.23 TO 1
GEAR
REMOVABLE FLOOR FLAT
ROTOCAST SEAT FRAMES
RUB RAIL (RUBBER AND ROPE)
SINGLE LEVER CONTROL WITH
LOCK OUT
SKI POLE
STAINLESS STEEL LIFTING
RINGS
STORAGE POUCH
TRANSOM SKI TOW RING
VDO INSTRUMENTATION TO
INCLUDE TACH, CLOCK,
WATER TEMPERATURE,
VOLTMETER, OIL PRESSURE,
FUEL AND HOURMETER
VERNAY MUFFLER
WATER STRAINER

OPTIONAL EQUIPMENT

BOARDING PLATFORM
DELUXE STERN SEAT
DUAL BUCKET SEATS
STEREO SYSTEM

Barefoot Nautique 2001

STANDARD EQUIPMENT

ADJUSTABLE DRIVER'S SEAT
BASIC FLOTATION
BATTERY BOX LID WITH TOOL
BOX
BILGE VENT SYSTEM WITH
BLOWER

BOW STORAGE
DELUXE LOVE SEAT WITH
COOLER
DELUXE PADDED MOTOR BOX
WITH HIDDEN HINGES
DUAL FINS
DUAL ELECTRIC HORNS
DUAL TOURNAMENT
SPEEDOMETERS
ELECTRIC BAILER WITH
AUTOMATIC ELECTRONIC
SENSING
ELECTRICAL SYSTEM 12V
WITH CIRCUIT BREAKERS &
INDICATOR LIGHTS
ENGINE WARNING SYSTEM
FUEL CHECK VALVE
(ANTI-SIPHON)
FUEL FILTER/WATER
SEPARATOR
IN-DASH DRINK HOLDERS
LARGE MIRROR
LOCKABLE GLOVE BOX
MARINE CARPET
NAVIGATIONAL LIGHTING
OIL DRAIN KIT
PCM POWER PLUS 1.23 TO 1
GEAR
REMOVABLE FLOOR FLAT
ROTOCAST SEAT FRAMES
RUB RAIL (RUBBER AND ROPE)
SINGLE LEVER CONTROL WITH
LOCK OUT
SKI POLE

STAINLESS STEEL LIFTING RINGS
STORAGE POUCH
TRANSOM SKI TOW RING
VDO INSTRUMENTATION TO INCLUDE TACH, CLOCK, WATER TEMPERATURE, VOLTMETER, OIL PRESSURE, FUEL AND HOURMETER
VERNAY MUFFLER
WATER STRAINER

OPTIONAL EQUIPMENT

BOARDING PLATFORM
DELUXE STERN SEAT
DUAL BUCKET SEATS
STEREO SYSTEM
TRANSOM MOUNT 3RD SPEEDOMETER (AVAILABLE ONLY WITH STANDARD INTERIOR)

Martinique BowRider

STANDARD EQUIPMENT

ADJUSTABLE DRIVER'S SEAT
ADJUSTABLE PASSENGER SEAT WITH SWIVEL
BASIC FLOTATION
BILGE VENT SYSTEM WITH BLOWER
DELUXE PADDED MOTOR BOX WITH HIDDEN HINGES
DRINK HOLDERS
DUAL FINS

ELECTRIC BAILER WITH AUTOMATIC ELECTRONIC SENSING
ELECTRIC HORN
ELECTRICAL SYSTEM 12V WITH CIRCUIT BREAKERS & INDICATOR LIGHTS
ENGINE WARNING SYSTEM
FUEL CHECK VALVE (ANTI-SIPHON)
FUEL FILTER/WATER SEPARATOR
HINGED STERN SEAT WITH STORAGE
LOCKABLE GLOVE BOX
MARINE CARPET
NAVIGATIONAL LIGHTING
OIL DRAIN KIT
PCM POWER PLUS 1.23 TO 1 GEAR
RECESSED STAINLESS STEEL CLEATS FORE, MID-SHIP AND AFT

REMOVABLE 25 QT. ICE CHEST
RUB RAIL (RUBBER AND ROPE)
SINGLE LEVER CONTROL WITH LOCK OUT
STAINLESS STEEL HAND RAILS, BOW AND STERN

STAINLESS STEEL LIFTING RINGS
STORAGE: PORT AND STARBOARD UNDER BOW AND BOW WALK-THROUGH AREA, UNDER STERN SEAT AND TRANSOM DECK
TEAK STEP PLATES, FORE AND AFT
TEAK STORAGE DRAWERS UNDER SEATS
TILT STEERING WHEEL
TONNEAU COVER FOR BOW
TRANSOM SKI TOW RING
TRI-COLOR GEL COAT
VDO INSTRUMENTATION TO INCLUDE TACH, SPEEDO, CLOCK, WATER TEMPERATURE, VOLTMETER, OIL PRESSURE, FUEL AND HOURMETER
VERNAY MUFFLER
WATER STRAINER
WINDSHIELD WITH SIDE VENTS AND HINGED WALK-THROUGH
WALK-THROUGH COVER

OPTIONAL EQUIPMENT

SKI POLE
STEREO SYSTEM
TEAK BOARDING PLATFORM

Martinique ClosedBow

STANDARD EQUIPMENT

ADJUSTABLE DRIVER'S SEAT
ADJUSTABLE PASSENGER SEAT WITH SWIVEL
BASIC FLOTATION
BILGE VENT SYSTEM WITH BLOWER
DELUXE PADDED MOTOR BOX WITH HIDDEN HINGES
DRINK HOLDERS
DUAL FINS
ELECTRIC BAILER WITH AUTOMATIC ELECTRONIC SENSING
ELECTRIC HORN
ELECTRICAL SYSTEM 12V WITH CIRCUIT BREAKERS & INDICATOR LIGHTS
ENGINE WARNING SYSTEM
FUEL CHECK VALVE (ANTI-SIPHON)
FUEL FILTER/WATER SEPARATOR
HINGED STERN SEAT WITH STORAGE
INDIRECT LIGHTING UNDER BOW
LOCKABLE GLOVE BOX
MARINE CARPET
NAVIGATIONAL LIGHTING
OIL DRAIN KIT
PCM POWER PLUS 1.23 TO 1 GEAR
RECESSED STAINLESS STEEL CLEATS FORE, MID-SHIP AND AFT

RUB RAIL (RUBBER AND ROPE)
SINGLE LEVER CONTROL WITH LOCK OUT
STAINLESS STEEL LIFTING RINGS
STAINLESS STEEL STERN RAIL
STORAGE: UNDER BOW, UNDER STERN SEAT, TRANSOM DECK AND FLOOR
TEAK STEP PLATES
TILT STEERING WHEEL
TRANSOM SKI TOW RING
TRI-COLOR GEL COAT
VDO INSTRUMENTATION TO INCLUDE TACH, SPEEDO, CLOCK, WATER TEMPERATURE, VOLTMETER, OIL PRESSURE, FUEL AND HOURMETER
VERNAY MUFFLER
WATER STRAINER
WINDSHIELD WITH SIDE VENTS

OPTIONAL EQUIPMENT

SKI POLE
STEREO SYSTEM
TEAK BOARDING PLATFORM

Fish Nautique

STANDARD EQUIPMENT

BASIC FLOTATION
BILGE VENT SYSTEM WITH BLOWER
BRASS SEACOCK
CENTER CONSOLE WITH BUILT-IN LOCKABLE TEAK RADIO BOX
DECK PIPE
DRINK HOLDERS
DUAL BATTERY COMPARTMENT WITH AUXILIARY SWITCH
DUAL LEVER CONTROL
ELECTRIC HORN
ELECTRICAL SYSTEM 12V FUSED WITH LIGHTED SWITCHES
ENGINE WARNING SYSTEM
FISH ROD HOLDERS, PR.
FORWARD ROPE LOCKER
FRESH WATER FLUSH KIT
FUEL CHECK VALVE (ANTI-SIPHON)
FUEL FILTER/WATER SEPARATOR
HAWSERS, FORE, MID-SHIP AND AFT
INNERLINER WITH THREE LOCKABLE STORAGE BINS
NAVIGATIONAL LIGHTING
NON-SKID INNERLINER FLOOR
OIL DRAIN KIT
OVERSIZED CATCH WELL
PCM POWER PLUS 1.23 TO 1 GEAR

RUB RAIL (RUBBER AND ROPE)
SELF BAILING FLOOR
STAINLESS STEEL BOW DECK RAIL
STAINLESS STEEL CLEATS, FORE, MID-SHIP AND AFT
STAINLESS STEEL LIFTING RINGS
STEP PLATES
STORAGE BEHIND FRONT CONSOLE SEATING
STORAGE BOXES
TWO IMPROVED AUTOMATIC BILGE PUMPS
VDO INSTRUMENTATION TO INCLUDE TACH, CLOCK, WATER TEMPERATURE, VOLTMETER, OIL PRESSURE, FUEL AND HOURMETER
VERNAY MUFFLER
WATER STRAINER

OPTIONAL EQUIPMENT

BOW CUSHIONS
NEW ROUND CORNER LIVE WELL
STAINLESS STEEL BOW RAIL WITH TEAK PULPIT
TEAK BOARDING PLATFORM



Boats shown rigged for photography. Many options shown not available through Correct Craft. Check local dealers for prices.

The SKI NAUTIQUE 2001 is the exclusive tow boat of the U.S. Masters Water Ski Championships and an official tow boat for Sea World of Florida, Sea World of Ohio and Sea World of Texas.

Correct Craft, whose policy is one of continuous improvement, reserves the right to discontinue or change specifications, models, equipment or prices at any time without incurring obligations.

CAUTION: USE ONLY CORRECT CRAFT APPROVED PARTS AND ACCESSORIES ON YOUR CORRECT CRAFT BOAT. THESE PARTS AND ACCESSORIES SHOULD BE INSTALLED ONLY BY CORRECT CRAFT OR AN AUTHORIZED CORRECT CRAFT DEALER.

AUTHORIZED CORRECT CRAFT DEALER:



6100 South Orange Avenue, Orlando, FL 32809-4610
(407) 855-4141 • FAX (407) 851-7844 • cable address CORRCRAFT • telex 56-7424 CORRCRAFT
For the name of your nearest dealer call 1 (800) 346-2092.