

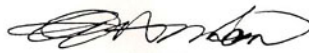


CORRECT CRAFT

Lally's Marine
River Road Rt. 65
2½ Mi. W. of Grand Rapids, O.
Ph: 419-832-6122

1988

"For over sixty years, Correct Craft has pursued a clear vision—to produce boats which offer the very best quality, performance and value. Our boat builders are true craftsmen, proud of their tradition of excellence. Each boat is virtually handmade, and quality is evident in every last touch and detail. Decades of refinements, innovations and improvements are focused on a single purpose—to make Correct Craft boats perform in the real world. Our unmatched record of high performance is underscored by our years of direct involvement in water sports. True value is measured in the return our boats offer to people. From tournament competition to family fun, the Correct Craft name is synonymous with genuine value on the waters of the world."



Walter N. Meloon
President/CEO

PROVERBS 3:5-6

"Trust in the Lord with all your heart, and do not rely on your own insight. In all your ways acknowledge Him, and He will make straight your paths."

THE LEGEND, PURE AND SIMPLE

The world-famous Ski Nautique 2001 has proven its leadership in tournament competition for over 25 years. The advanced hull design and classic inboard powerplant provide precise handling and responsive power. The official towboat for major tournament events around the globe, Ski Nautique 2001 is the result of years of boat building expertise and Correct Craft's deep dedication to the sport of water skiing.

Performance is an essential quality for serious boating whether you are a competition skier or a family out for weekend fun. Ski

Nautique 2001 tracks true in the water and responds nimbly to the driver's touch. The powerful inboard drive system is simple, reliable and easy to maintain. Engineered for a smooth ride, the boat planes instantly and corners tight and sure.

The spacious interior of the Ski Nautique 2001 is engineered and quality-crafted for quiet comfort. Thoughtful attention to detail is evident in extra touches like abundant storage, easy access to maintenance areas and even a built-in ice chest.

This year's Ski Nautique 2001 features the bold look of impressive new graphics. The

instrumentation pod has also been updated—the sophisticated VDO gauges clustered in a more compact arrangement for instant visibility. When there's little room for improvement, at Correct Craft we improve the little things—like longer lasting seat seams and hidden motor box hinges.



SKI NAUTIQUE 2001

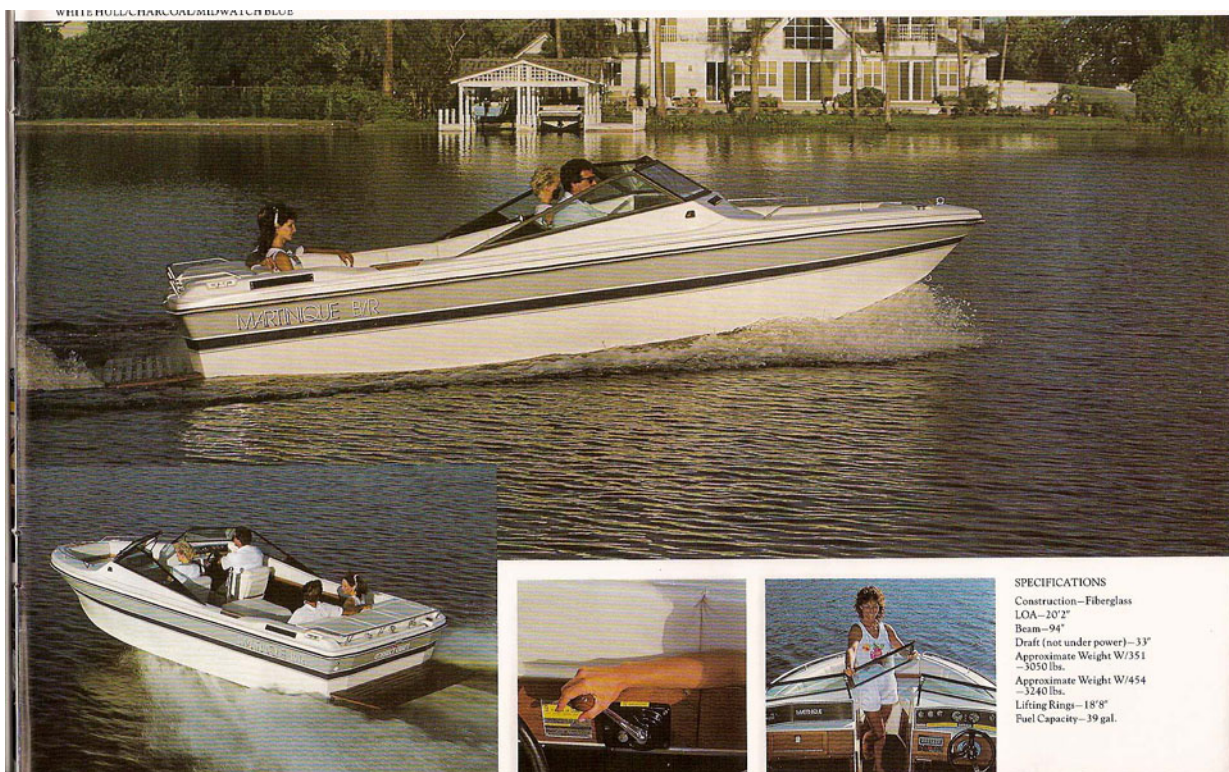
WHITE HULL/TIRS RED/BLACK



SPECIFICATIONS

Construction—Fiberglass
LOA—18'9"
Beam—54"
Draft (out under power)—14"
Approximate Weight (dry)
—2,500 lbs.
Lifting Rings (between
centers)—16'7"
Fuel Capacity—27 gal.

WHITE HULL/CHARCOAL MIDWATCH BLUE



SPECIFICATIONS

Construction—Fiberglass
LOA—20'2"
Beam—94"
Draft (not under power)—33"
Approximate Weight W/351
—3050 lbs.
Approximate Weight W/454
—3240 lbs.
Lifting Rings—18"8"
Fuel Capacity—39 gal.

A TOUCH OF CABIN FEVER

The Martinique C/C is just the ticket to make the pulse quicken and temperatures rise out on the big lake. The clean lines and performance hull cut a dashing image on the water, true to the Martinique family tradition. The unique cuddy cabin configuration makes the Martinique C/C the perfect weekend cruiser, its enclosed bow housing a small vee-berth, storage and a head. A sun lounge is optional—the folding back seat locks up into a very comfortable lounging position.

Like all boats in the Martinique line, the Martinique C/C features powerful and reliable inboard drive, an excellent hull profile bred for skiing, full VDO instrumentation, optional stereo, comfortable interior and the championship performance which is the Correct Craft trademark. The Martinique C/C is a boat for people who take their fun seriously, crafted by professionals who take their boat building seriously.

The rich heritage of handcrafting is evident in the choice materials and masterful attention to detail applied in the construction of

the Martinique C/C. This boat is a joy to own because the design has been fine-tuned through tireless lake testing and demanding performance trials.



MARTINIQUE CC

WHITE HULL/MIDWATCH BLUE/BURGUNDY



SPECIFICATIONS

Construction—Fiberglass
LOA—20'2"
Beam—64"
Draft (not under power)—13"
Approximate Weight W/351
—3150 lbs.
Approximate Weight W/454
—3440 lbs.
Lifting Bins—18'8"
Fuel Capacity—39 gal.

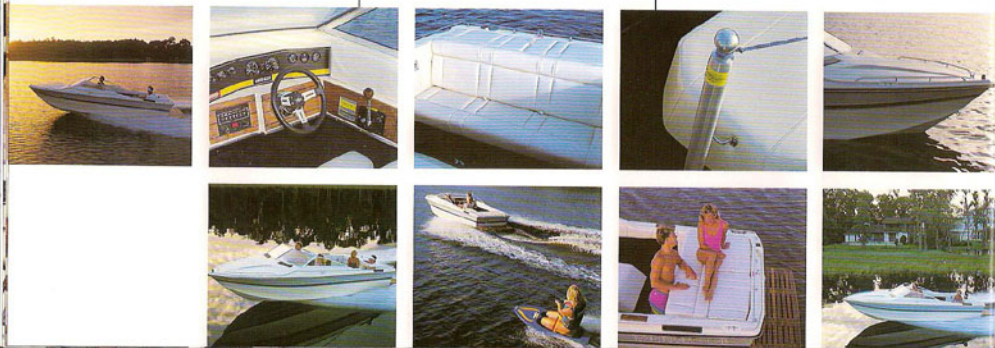
GOOD LOOKS RUN IN THE FAMILY

The handsome Martinique C/B completes the family of boats built on the classic Martinique hull. This impressive boat runs just like it looks—hot! The powerful inboard drive and performance hull design make the Martinique C/B a sleek, fast, quick-handling family ski boat. The closed bow traces a low profile, gently sloping toward the stylishly raked windshield. Storage in the bow area is ample, the interior is nicely finished and features indirect lighting.

The Martinique C/B boasts a comfortable, well-appointed cockpit engineered for quiet. All usable space has been thoughtfully configured for easy, roomy storage. A sun lounge is optional, as is a sophisticated stereo. All instrumentation is strictly VDO and arranged for maximum visibility.

Details make the difference at Correct Craft, and the Martinique C/B exhibits the classic fit and feel of top quality. Hull and deck are precisely mated with stainless steel screws, aluminum rivets, resin and silicone bond. A precision milled Nibral bronze prop and rudder

are evidence of a boat built to last. The Martinique C/B is a stellar performer whose beauty is much more than skin deep.



MARTINIQUE CB

TAFFY IVOIRY HULL/WARM GRAY/MIDWATCH BLUE



SPECIFICATIONS
 Construction—Fiberglass
 LOA—20'2"
 Beam—9'4"
 Draft—3'3"
 Approximate Weight W/351
 ~2950 lbs.
 Approximate Weight W/654
 ~3140 lbs.
 Lifting Rings (between
 centers)—18'9"
 Fuel Capacity—60 gal.

EVOLUTION OF A DOMINANT SPECIES

The Dominique is an outstanding illustration of how one good thing leads to another. In designing a boat to meet the exacting demands of barefoot skiers, Correct Craft developed a unique hull configuration that turned out to be a whole new animal. This advanced hull goes beyond the specialized needs of tournament-caliber barefooting to deliver downright exciting performance across the board. Correct Craft brought this new hull concept to its ultimate conclusion by adding a custom interior package, luxury

appointments and distinctive graphics. Evolution complete, the Dominique was born! Wrapping superior performance in a handsome package, the Dominique makes a bold statement on the water. Full VDO instrumentation is clustered in a sophisticated dash pod, putting essential information at the immediate command of the driver. The powerful inboard drive system is smooth, instantly responsive and easy to maintain. The Dominique's nimble handling characteristics are, in a word, impressive and have to be experienced to be fully appreciated.

The classic breeding of the Dominique is readily apparent in its quality, performance and value—unmistakable characteristics of the Correct Craft line.



DOMINIQUE

WHITE HULL/MIDWATCH BLUE/CHARCOAL



SPECIFICATIONS
Construction—Fiberglass
LOA—19'
Beam—34"
Draft (not under power)—25"
Approximate Weight W/351
—1350 lbs.
Approximate Weight W/454
—2750 lbs.
Lifting Rings (between
centers)—16"
Fuel Capacity—27 gal.

BAREFOOTIN'

The Barefoot Nautique was created in response to the very special needs of the barefoot skier. The hull has been carefully engineered to track a precise, steady course while generating nearly perfect wake conditions. The responsive inboard powerplant is smooth, powerful and reliable. Handling is crisp and true with superior cornering capability under all types of water conditions. The clean ride provides a strong, stable tow for exciting barefoot maneuvers.

The Barefoot Nautique shares the same deck lines as its cousin, the Ski Nautique 2001. The sophisticated VDO instrumentation cluster provides accurate, detailed monitoring of all performance functions at a single glance. Ample storage, comfortable seating and a quiet ride complement the high performance soul of the Barefoot Nautique. The boat's superb hull design makes it ideal for family skiing, and the available luxury interior package makes it the perfect craft for weekend water sports excitement.

Born of Correct Craft's ongoing commitment to the sport of water skiing, the Barefoot Nautique represents a significant advancement in the state of the art of family enjoyment.



BAREFOOT NAUTIQUE 2001

WHITE HULL/ICE BLUE/DARK BLUE



SPECIFICATIONS

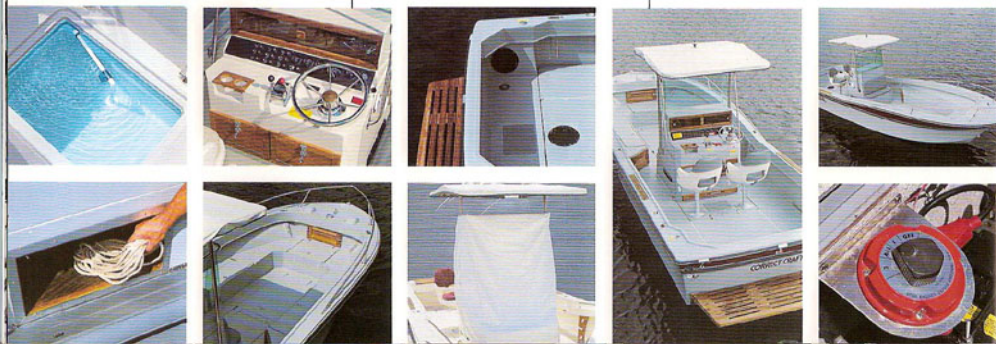
Construction—Fiberglass
LOA—19'
Beam—84"
Draft (not under power)—26"
Approximate Weight W/351
—1450 lbs.
Approximate Weight W/454
—1650 lbs.
Lifting Rings (between
seats)—16"
Fuel Capacity—27 gal.

THE LURE OF BLUE WATER

In the case of the Fish Nautique, form definitely follows function. Designed for serious fishermen, the Fish Nautique clears the channel with a hull design born for blue water. This center-console fisherman planes easily as the big vee-hull slices neatly through the swells. The powerful inboard drive system provides positive response, reassuring reliability and easy maintenance. Handling is true, precise and confident. The ride is impressively smooth. The Fish Nautique moves smartly out to sea, backed by

Correct Craft quality and decades of commitment to superior craftsmanship. The Fish Nautique is a very stable fishing platform with decks fully cleared for action. The cockpit is open and spacious, with room to really move. Abundant stowage areas store gear easily and keep essential equipment close at hand. The center console is a well-engineered command center with room for radio, depth finder and added instruments. An 85-gallon fuel tank provides generous capacity for comfortable cruising range.

Correct Craft painstakingly inspects, tests and tunes each Fish Nautique—so out on the water all you have to worry about is finding the fish. Dedicated to the spirit of the true sportsman, the Fish Nautique is a sleek, powerful craft which delivers truly impressive levels of performance.



FISH NAUTIQUE

WARM GRAY HULL/MIDWATCH BLUE/CHARCOAL



SPECIFICATIONS
 Construction—Fiberglass
 LOA—23'
 Beam—9'
 Draft (out under power)—30" single
 Approximate Weight (dry)
 —3900 lbs
 Lifting Rings (between
 centers)—20" V
 Fuel Capacity—85 gal.
 *Rocket Launcher shown is not a
 Corros Craft option

TO THE LAST DETAIL

Correct Craft has set the standard for boat building excellence for more than six decades. High quality is a family tradition that dates back to 1925. Skilled craftsmen construct every boat with exceptional care, genuine pride and a sharp eye for detail. Each boat bearing the Correct Craft name meets or exceeds all Coast Guard regulations and National Marine Manufacturers Association Certified Standards. The manufacturing process is completed with superior materials, advanced techniques and the masterful touch of employees who truly love what they are doing.

Completing the boating package, Correct Craft manufactures its own trailers—each one precisely engineered to match the hull of a specific boat. Correct Craft is one of only a very few boat building companies that owns and operates its own trailer manufacturing facility. Correct Craft trailers are incredibly rugged and feature a design especially suited for the inboard drive system of our boats. The convenient drive-on, drive-off system allows launch and recovery without having to leave the boat.

Quality is measured in the little details that complete your boating picture. From advanced glass fibers for stronger hulls to

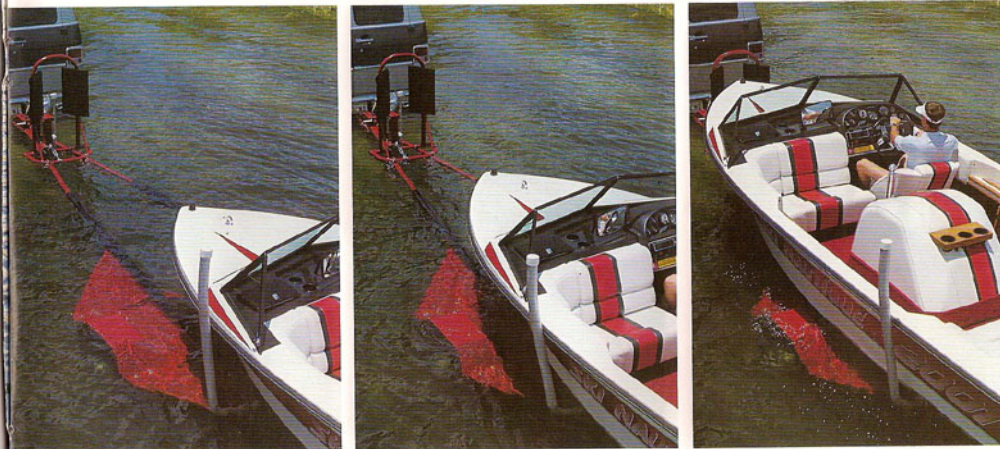
trailers that tow easy and true, Correct Craft takes a measure of well-earned pride in providing a superior boating package that provides uncompromising quality down to the last detail.

States have varying laws about trailer tie-downs. Learn what your local and state laws are about trailer tie-downs before ordering your Correct Craft trailer. Tie-downs are equipped on all Correct Craft trailers, however, you are responsible for buying and installing straps.

CAUTION: TRAILER FENDERS ARE SLIPPERY WHEN WET. USE EXTREME CARE WHEN STEPPING ON THEM TO PREVENT PERSONAL INJURY.



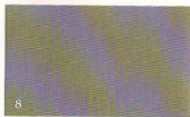
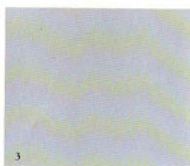
TRAILERS



MODEL NUMBER	DESCRIPTION	POW BUMPER	LIGHTS	DOLLY JACK	FENDERS	LOADING EQUIPMENT	SAFETY CHAINS	SPARE TIRE	SURGE BRAKES	TRAILER COUPLER	CHROME WHEELS	CALVANIZING	PIN STRAPPING
3	SKINAUTIQUE	NA	STD	STD	STD	STD	STD	STD	STD	940 LBS	STD	OPT	STD
4-DV	BAREFOOT NAUTIQUE, DOMINIQUE, MARTINIQUE B/R, C/B, & C/C	NA	STD	STD	STD	STD	STD	STD	STD	1000 LBS	STD	OPT	STD
4-T-DV*	BAREFOOT NAUTIQUE, DOMINIQUE, MARTINIQUE B/R, C/B, & C/C	NA	STD	STD	STD	STD	STD	STD	STD	1100 LBS	STD	OPT	STD
5-T-DV*	FISH NAUTIQUE	STD	STD	STD	STD	NA	STD	OPT	STD*	1500 LBS	STD	OPT	STD

DV-DEEP VEE
T-TANDEM
STD-STANDARD
OPT-OPTIONAL
NA-NOT AVAILABLE
*SURGE BRAKES ON
FRONT AXLE ONLY.

Due to the differences between available printing process inks and the actual materials used in Correct Craft boats, the colors in this brochure are similar representations and not exact reproductions of the final product.



GEL COATS:

BASE:

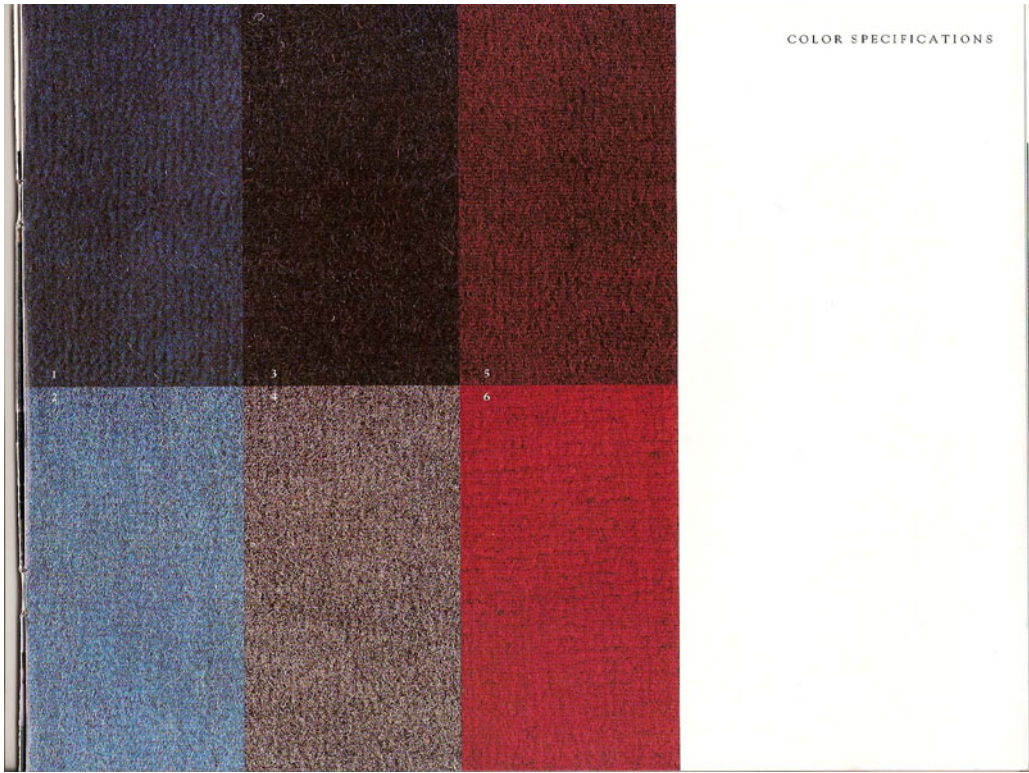
- 1) Taffy Ivory
- 2) White
- 3) Warm Gray

ACCENT:

- 4) Midwatch Blue
- 5) Burgundy
- 6) Fire Red
- 7) Ice Blue
- 8) Charcoal
- 9) Black

CARPETS:

- 1) 820 Navy
- 2) 730 Lite Blue
- 3) 24 Black
- 4) 10 Charcoal
- 5) 822 Burgundy
- 6) 1177 Fire Red



COLOR SPECIFICATIONS

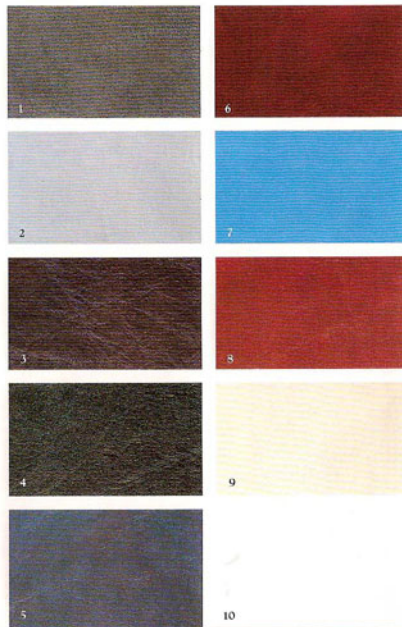
Due to the differences between available printing process inks and the actual materials used in Correct Craft boats, the colors in this brochure are similar representations and not exact reproductions of the final product.



COLOR SPECIFICATIONS

VINYLS:

- 1) 6631 Charcoal
- 2) 6754 Lite Gray
- 3) 6758 Cordovan
- 4) 6662 Raven Black
- 5) 6764 Marine Blue
- 6) 6757 Red Wine
- 7) 6755 Aqua Blue
- 8) 6756 Signal Red
- 9) 6649 Gull White
- 10) 6704 Snow White



SKI NAUTIQUE

STANDARD EQUIPMENT

ADJUSTABLE DRIVER'S SEAT
BATTERY BOX LID WITH
TOOL BOX
BILGE VENT SYSTEM
WITH BLOWER
BOW STORAGE
DELUXE LOVE SEAT
WITH COOLER
DRAL TOURNAMENT
SPEEDOMETERS
ELECTRIC BAILER/AUTO
ELECTRIC HORN
ELECTRICAL SYSTEM 12V
WITH CIRCUIT BREAKERS &
INDICATOR LIGHTS
ENGINE WARNING SYSTEM
FINS (3)
FLOTATION
FUEL CHECK VALVE
(ANTI-SIPHON)
FUEL FILTER/WATER
SEPARATOR
IN-DASH DRINK HOLDERS
INTERNAL MUFFLERS
LARGE MIRROR
LIFTING RINGS
LOCKING GLOVE BOX
MARINE CARPET
NAVIGATIONAL LIGHTING
OIL DRAIN KIT
REMOVABLE FLOOR PLAT
ROTACAST SEAT FRAMES
RUB RAIL (RUBBER AND ROPE)
SINGLE LEVER CONTROL
SKI POLE
STORAGE POUCH
VIDEO INSTRUMENTATION TO
INCLUDE TACH, CLOCK,
WATER TEMPERATURE,
VOLTMETER, OIL PRESSURE,
FUEL AND HOURMETER
WATER STRAINER

NEW STANDARD FEATURES
DELUXE PADDED MOTOR BOX
WITH HIDDEN HINGES

NEW HULL GRAPHICS
REDISIGNED INSTRUMENT
PANEL

OPTIONAL EQUIPMENT

BATTERY
BATTERY SAFETY SWITCH
BIMINI TOP
BOARDING PLATFORM,
FIBERGLASS
BOARDING PLATFORM, TEAK
CIGARETTE LIGHTER
DELUXE STERN SEAT
WITH STORAGE
DRINK HOLDERS ON
MOTOR BOX
EXTENDED COAMING PAD
WITH TEAK TRIM
FIRE EXTINGUISHER
FRESH WATER COOLING
FRESH WATER FLUSH KIT
HALON FIRE
EXTINGUISHING SYSTEM
MASTER MARK HEATER
SNAP-IN STERN SEAT
STAINLESS STEEL BOW
DECK RAIL
STAINLESS STEEL SHEER RAIL
STARBOARD SKI RACK
STEP PLATES
STEREO

NEW OPTIONAL FEATURE
DELUXE BOAT COVER WITH
OAK BOWS

MARTINIQUE B/R

STANDARD EQUIPMENT

ADJUSTABLE DRIVER'S SEAT
ADJUSTABLE PASSENGER SEAT
WITH SWIVEL
BILGE VENT SYSTEM
WITH BLOWER
DELUXE PADDED MOTOR BOX
DELUXE TEAK INTERIOR TRIM
DRINK HOLDERS

DUAL FINS
ELECTRIC BAILER/AUTO
ELECTRIC HORN
ELECTRICAL SYSTEM 12V
WITH CIRCUIT BREAKERS &
INDICATOR LIGHTS
ENGINE WARNING SYSTEM
FLOTATION
FUEL CHECK VALVE
(ANTI-SIPHON)
FUEL FILTER/WATER
SEPARATOR
HINGED STERN SEAT
WITH STORAGE
INTERNAL MUFFLERS
LIFTING RINGS
LOCKABLE GLOVE BOX
MARINE CARPET
NAVIGATIONAL LIGHTING
OIL DRAIN KIT
RECESSED STAINLESS STEEL
CLEATS FORE AND AFT
REMOVABLE 25 QT. ICE CHEST
RUB RAIL (RUBBER AND ROPE)
SINGLE LEVER CONTROL
STAINLESS STEEL HAND
RAILS, BOW AND STERN
STORAGE PORT AND
STARBOARD UNDER TOW
AND BOW WALK-THRU AREA,
UNDER STERN SEAT AND
TRANSOM DECK
TEAK STEP PLATES, FORE
AND AFT
TEAK STORAGE DRAWERS
UNDER SEATS
TRI-COLOR GEL COAT
VIDEO INSTRUMENTATION TO
INCLUDE TACH, SPEEDO,
CLOCK, WATER
TEMPERATURE, VOLTMETER,
OIL PRESSURE, FUEL AND
HOURMETER
WATER STRAINER
WINDSHIELD WITH HINGED
WALK-THROUGH

NEW STANDARD FEATURE
WINDSHIELD WITH SIDE
VENTS

OPTIONAL EQUIPMENT

BATTERY
BATTERY SAFETY SWITCH
BENCH SEAT
CIGARETTE LIGHTER
FIRE EXTINGUISHER
FRESH WATER COOLING
FRESH WATER FLUSH
HALON FIRE
EXTINGUISHING SYSTEM
MASTER MARK HEATER
SIDE CURTAINS WITH
BACKDROP
SKI POLE
STEREO SYSTEM
SUN LOUNGE
SUN TOP
TEAK BOARDING PLATFORM
TONNEAU COVER FOR BOW
WALK-THRU COVER

NEW OPTIONAL FEATURE
DELUXE BOAT COVER
WITH OAK BOWS

MARTINIQUE C/C

STANDARD EQUIPMENT

ADJUSTABLE DRIVER'S SEAT
ADJUSTABLE PASSENGER SEAT
WITH SWIVEL
DELUXE PADDED MOTOR BOX
DELUXE TEAK INTERIOR TRIM
DRINK HOLDERS
DUAL FINS
ELECTRIC BAILER/AUTO
ELECTRIC HORN
ELECTRICAL SYSTEM 12V
WITH CIRCUIT BREAKERS &
INDICATOR LIGHTS
ENGINE WARNING SYSTEM
FLOTATION
FORWARD ROPE LOCKER
FUEL CHECK VALVE
(ANTI-SIPHON)
HINGED STERN SEAT WITH
STORAGE
INTERNAL MUFFLERS

LIFTING RINGS
LOCKABLE STORAGE DRAWER
UNDER SEATS
MARINE CARPET
NAVIGATIONAL LIGHTING
OIL DRAIN KIT
RECESSED STAINLESS STEEL
CLEATS FORE AND AFT
RUB RAIL (RUBBER AND ROPE)
SINGLE LEVER CONTROL
STAINLESS STEEL HAND
RAILS, BOW AND STERN
STORAGE UNDER STERN SEAT
AND TRANSOM DECK
TEAK STEP PLATES, FORE AND
AFT
TRI-COLOR GEL COAT
V-BERTH WITH POTTY
VIDEO INSTRUMENTATION TO
INCLUDE TACH, SPEEDO,
CLOCK, WATER
TEMPERATURE, VOLTMETER,
OIL PRESSURE, FUEL AND
HOURMETER
WATER STRAINER

NEW STANDARD FEATURE

WINDSHIELD WITH SIDE
VENTS

OPTIONAL EQUIPMENT

BATTERY
BATTERY SAFETY SWITCH
CENTER BERTH CUSHIONS
CIGARETTE LIGHTER
FIRE EXTINGUISHER
FRESH WATER COOLING
FRESH WATER FLUSH
HALON FIRE EXTINGUISHING
SYSTEM
SIDE CURTAINS WITH
BACKDROP
SKI POLE
STEREO SYSTEM
SUN LOUNGE
SUN TOP
TEAK BOARDING PLATFORM

NEW OPTIONAL FEATURE
DELUXE BOAT COVER
WITH OAK BOWS

FEATURES

MARTINIQUE C/B

STANDARD EQUIPMENT

ADJUSTABLE DRIVER'S SEAT
ADJUSTABLE PASSENGER SEAT
WITH SWIVEL
BILGE VENT SYSTEM WITH
BLOWERS
DELUXE PADDED MOTOR BOX
DELUXE TEAK INTERIOR TRIM
DRINK HOLDERS
DUAL FINS
ELECTRIC BAILER/AUTO
ELECTRIC HORN
ELECTRICAL SYSTEM 12V
WITH CIRCUIT BREAKERS &
INDICATOR LIGHTS
ENGINE WARNING SYSTEM
FLOTATION
FUEL CHECK VALVE
(ANTI-SIPHON)
FUEL FILTER/WATER
SEPARATOR
HINGED STERN SEAT
WITH STORAGE
INDIRECT LIGHTING UNDER
BOW
INTERNAL MUFFLERS
LIFTING RINGS
LOCKABLE GLOVE BOX
MARINE CARPET
NAVIGATIONAL LIGHTING
OIL DRAIN KIT
RECESSED STAINLESS STEEL
CLEATS FORE AND AFT
RUB RAIL (RUBBER AND ROPE)
SINGLE LEVER CONTROL
STAINLESS STEEL HAND
RAILS, BOW AND STERN
STORAGE UNDER BOW,
UNDER STERN SEAT,
TRANSOM DECK AND FLOOR
TEAK STEP PLATES
TRI-COLOR GEL COAT
VDO INSTRUMENTATION TO
INCLUDE TACH, SPEEDO,
CLOCK, WATER
TEMPERATURE, VOLTMETER,
OIL PRESSURE, FUEL AND
HOURMETER

WATER STRAINER

OPTIONAL EQUIPMENT

BATTERY
BATTERY SAFETY SWITCH
CIGARETTE LIGHTER
DELUXE BOAT COVER WITH
OAK BOWS
FIRE EXTINGUISHER
FRESH WATER COOLING
FRESH WATER FLUSH
HALON FIRE EXTINGUISHING
SYSTEM
MASTER MARK HEATER
SIDE CURTAINS WITH
BACKDROP
SKI POLE
STEREO SYSTEM
SUN LOUNGE
SUN TOP
TEAK BOARDING PLATFORM

DOMINIQUE

STANDARD EQUIPMENT

ADJUSTABLE DRIVER'S SEAT
ADJUSTABLE PASSENGER
BUCKET SEAT WITH SWIVEL
BILGE VENT SYSTEM
WITH BLOWER
BOW STORAGE
DELUXE STERN SEAT WITH
STORAGE
DUAL FINS
DUAL HORNS
DUAL TOURNAMENT
SPEEDOMETERS
ELECTRIC BAILER/AUTO
ELECTRICAL SYSTEM 12V
WITH CIRCUIT BREAKERS &
INDICATOR LIGHTS
ENGINE WARNING SYSTEM
FLOTATION
FUEL CHECK VALVE
(ANTI-SIPHON)
FUEL FILTER/WATER
SEPARATOR

IN-DASH DRINK HOLDERS

INTERNAL MUFFLERS
LARGE MIRROR
LIFTING RINGS
LOCKABLE GLOVE BOX
MARINE CARPET
NAVIGATIONAL LIGHTING
OIL DRAIN KIT
REMOVABLE FLOOR FLAT
ROTOCAST SEAT FRAMES
RUB RAIL (RUBBER AND ROPE)
SINGLE LEVER CONTROL
STORAGE POUCH
VDO INSTRUMENTATION TO
INCLUDE TACH, CLOCK,
WATER TEMPERATURE,
VOLTMETER, OIL PRESSURE,
FUEL AND HOURMETER
WATER STRAINER

NEW STANDARD FEATURE

DELUXE PADDED ENGINE BOX
WITH HIDDEN HINGES

OPTIONAL EQUIPMENT

BATTERY
BATTERY SAFETY SWITCH
Bimini TOP
CIGARETTE LIGHTER
DRINK HOLDERS ON
MOTOR BOX
FIRE EXTINGUISHER
FRESH WATER COOLING
FRESH WATER FLUSH KIT
HALON FIRE EXTINGUISHING
SYSTEM
LOVE SEAT WITH BUILT IN
COOLER
MASTER MARK HEATER
SKI POLE
STAINLESS STEEL BOW
DECK RAIL
STAINLESS STEEL SHEER RAIL
STARBOARD SKI RACK
STEP PLATES
STEREO
TEAK BOARDING PLATFORM

NEW OPTIONAL FEATURE

DELUXE BOAT COVER
WITH OAK BOWS

BAREFOOT NAUTIQUE

STANDARD EQUIPMENT

ADJUSTABLE DRIVER'S SEAT
BATTERY BOX LID WITH
TOOL BOX
BILGE VENT SYSTEM
WITH BLOWER
BOW STORAGE
DELUXE LOVE SEAT
WITH COOLER
DUAL FINS
DUAL HORNS
DUAL TOURNAMENT
SPEEDOMETERS
ELECTRIC BAILER/AUTO
ELECTRICAL SYSTEM 12V
WITH CIRCUIT BREAKERS &
INDICATOR LIGHTS
ENGINE WARNING SYSTEM
FLOTATION
FUEL CHECK VALVE
(ANTI-SIPHON)
FUEL FILTER/WATER
SEPARATOR
IN-DASH DRINK HOLDERS
INTERNAL MUFFLERS
LARGE MIRROR
LIFTING RINGS
LOCKING GLOVE BOX
MARINE CARPET
NAVIGATIONAL LIGHTING
OIL DRAIN KIT
REMOVABLE FLOOR FLAT
ROTOCAST SEAT FRAMES
RUB RAIL (RUBBER AND ROPE)
SINGLE LEVER CONTROL
SKI POLE
STORAGE POUCH

VDO INSTRUMENTATION TO
INCLUDE TACH, CLOCK,
WATER TEMPERATURE,
VOLTMETER, OIL PRESSURE,
FUEL AND HOURMETER
WATER STRAINER

NEW STANDARD FEATURES

DELUXE PADDED ENGINE BOX
WITH HIDDEN HINGES
NEW HULL GRAPHICS

OPTIONAL EQUIPMENT

BATTERY
BATTERY SAFETY SWITCH
Bimini TOP
CIGARETTE LIGHTER
DELUXE STERN SEAT WITH
STORAGE
DRINK HOLDERS ON
MOTOR BOX
EXTENDED COAMING PAD
WITH TEAK TRIM
FIRE EXTINGUISHER
FRESH WATER COOLING
FRESH WATER FLUSH KIT
HALON FIRE EXTINGUISHING
SYSTEM
MASTER MARK HEATER
OFFICIAL'S JUMP SEAT
SNAR IN STERN SEAT
STAINLESS STEEL BOW
DECK RAIL
STAINLESS STEEL SHEER RAIL
STARBOARD SKI RACK
STEP PLATES
STEREO
TEAK BOARDING PLATFORM
TRANSOM MOUNT 3RD
SPEEDOMETER ON STANDARD
INTERIOR ONLY

NEW OPTIONAL FEATURE

DELUXE BOAT COVER
WITH OAK BOWS

FISH NAUTIQUE

STANDARD EQUIPMENT

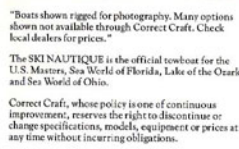
BILGE VENT SYSTEM WITH BLOWER
BRASS SEACOCK
CENTER CONSOLE WITH BUILT-IN LOCKABLE TEAK RADIO BOX
DECK PIPE
DRINK HOLDERS
DUAL BATTERY COMPARTMENT WITH SAFETY SWITCH
DUAL LEVER CONTROL
ELECTRIC FUEL GAUGE
ELECTRIC HORN
ELECTRICAL SYSTEM 12V FUSED WITH LIGHTED SWITCHES
FISH ROD HOLDERS, FR. FLotation
FORWARD ROPE LOCKER
FRESH WATER FLUSH KIT
FUEL CHECK VALVE (ANTI-SIPHON)
FUEL FILTER/WATER SEPARATOR
HAWSEERS, FORWARD, MID-SHIP AND AFT
INNERLINER WITH THREE LOCKABLE STORAGE BINS
INTERNAL MUFFLERS
LIFTING RINGS
NAVIGATIONAL LIGHTING
NON-SKID INNERLINER FLOOR
OIL DRAIN KIT
OVERSIZED CATCH WELL
RUB RAIL (RUBBER AND ROPE)
SELF-BAILING FLOOR
STAINLESS STEEL BOW DECK RAIL
STAINLESS STEEL CLEATS, FORWARD, MID-SHIP AND AFT
STORAGE BEHIND FRONT CONSOLE SEATING
STORAGE BOXES
WATER STRAINER

NEW STANDARD FEATURES

TWO IMPROVED BILGE PUMPS

OPTIONAL EQUIPMENT

BATTERY
BOW CUSHIONS
BRASS WATER STRAINER
CIGARETTE LIGHTER
CLEAR CONNECTOR
CONSOLE COVER
ELECTRIC SPOTLIGHT
FIRE EXTINGUISHER
FRESH WATER COOLING
HALON FIRE EXTINGUISHING SYSTEM
LIVEWELL
PEDESTAL SEAT COVER
PORTABLE TOILET
PRIVACY CURTAIN
PROP GUARD (SKEG)
SPLAY HOOD
STAINLESS STEEL BOW RAIL WITH TEAK PULIT
TEAK BOARDING PLATFORM



"Boats shown rigged for photography. Many options shown not available through Correct Craft. Check local dealers for prices."

The SKI NAUTIQUE is the official towboat for the U.S. Masters, Sea World of Florida, Lake of the Ozarks and Sea World of Ohio.

Correct Craft, whose policy is one of continuous improvement, reserves the right to discontinue or change specifications, models, equipment or prices at any time without incurring obligations.

CAUTION: USE ONLY CORRECT CRAFT APPROVED PARTS AND ACCESSORIES ON YOUR CORRECT CRAFT BOAT. THESE PARTS AND ACCESSORIES SHOULD BE INSTALLED ONLY BY CORRECT CRAFT OR AN AUTHORIZED CORRECT CRAFT DEALER.



5717 S. ORANGE AVENUE • ORLANDO, FLORIDA 32839-4295
P.O. BOX 591389 • ORLANDO, FLORIDA 32859-3389 • 815-855-4141